

Datasheet for ABIN564802
anti-TMEM115 antibody (AA 1-351)



[Go to Product page](#)

3 Images

1 Publication

Overview

Quantity:	100 µg
Target:	TMEM115
Binding Specificity:	AA 1-351
Reactivity:	Human
Host:	Mouse
Clonality:	Monoclonal
Conjugate:	This TMEM115 antibody is un-conjugated
Application:	ELISA, Western Blotting (WB)

Product Details

Purpose:	Mouse monoclonal antibody raised against a full length recombinant PL6.
Immunogen:	PL6 (AAH17367, 1 a.a. ~ 351 a.a) full-length recombinant protein with GST tag. MW of the GST tag alone is 26 KDa.
Sequence:	MQRALPGARQ HLGAILASAS VVVKALCAAV LFLYLLESAV DTGCLAVTPG YLFPPNFWIW TLATHGLMEQ HVWDVAISLT TVVAGRLLLE PLWGALELLI FFSVNVNSVG LLGAFAYLLT YMASFNLVYL FTVRIHGALG FLGGVLVALK QTMGDCVVLV VPQVRVSVMP MLLLALLLLL RLATLLQSPA LASYGFLLS SWVYLRFYQR HSRGRGDMAD HFAFATFFPE ILQPVVGLLA NLVHSLLVKV KICQKTVKRY DVGAPSSITI SLPGTDPQDA ERRRQLALKA LNERLKRVED QSIWPSMDDD EEESGAKVDS PLPSDKAPTP PGKGAAPES LITFEAAPPT L
Clone:	3D4
Isotype:	IgG1

Product Details

Cross-Reactivity:	Human
Characteristics:	Antibody Reactive Against Recombinant Protein.

Target Details

Target:	TMEM115
Alternative Name:	TMEM115 (TMEM115 Products)
Background:	Full Gene Name: transmembrane protein 115 Synonyms: PL6
Gene ID:	11070

Application Details

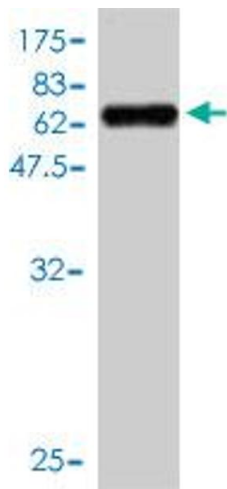
Application Notes:	Optimal working dilution should be determined by the investigator.
Restrictions:	For Research Use only

Handling

Buffer:	In 1x PBS, pH 7.4
Handling Advice:	Aliquot to avoid repeated freezing and thawing.
Storage:	-20 °C
Storage Comment:	Store at -20°C or lower. Aliquot to avoid repeated freezing and thawing.

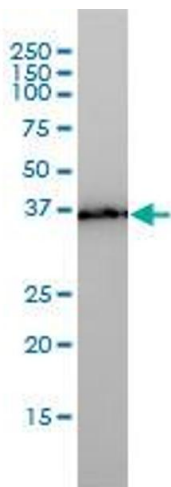
Publications

Product cited in:	Ong, Tran, Gounko, Hong: "TMEM115 is an integral membrane protein of the Golgi complex involved in retrograde transport." in: Journal of cell science , Vol. 127, Issue Pt 13, pp. 2825-39, (2014) (PubMed).
-------------------	---



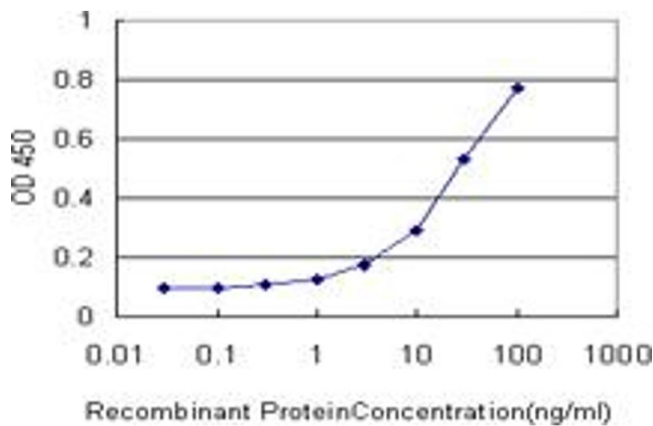
Western Blotting

Image 1. Western Blot detection against Immunogen (64.35 KDa) .



Western Blotting

Image 2. PL6 monoclonal antibody (M01), clone 3D4 Western Blot analysis of PL6 expression in HepG2 .



ELISA

Image 3. Detection limit for recombinant GST tagged TMEM115 is approximately 1ng/ml as a capture antibody.