



[Go to Product page](#)

Datasheet for ABIN564831

anti-CDC42EP1 antibody (AA 1-384)

1 Image

Overview

Quantity:	100 µg
Target:	CDC42EP1
Binding Specificity:	AA 1-384
Reactivity:	Human
Host:	Mouse
Clonality:	Monoclonal
Conjugate:	This CDC42EP1 antibody is un-conjugated
Application:	Western Blotting (WB), ELISA

Product Details

Purpose:	Mouse monoclonal antibody raised against a full length recombinant CDC42EP1.
Immunogen:	CDC42EP1 (AAH09356, 1 a.a. ~ 384 a.a) full-length recombinant protein with GST tag. MW of the GST tag alone is 26 KDa.
Sequence:	MPGPQGGRGA ATMSLGKLSV VGWVSSSQGK RRLTADMISH PLGDFRHTMH VGRGGDVFGD TSFLSNHGGG SGSTHRSPRS FLAKKLQLVR RVGAPRRMA SPPAPSPAPP AISPIIKNAI SLPQLNQAAY DSLVVGKLSF DSSPTSSTDG HSSYGLDSGF CTISRLPRSE KPHDRDRDGS FPSEPLRRS DSLLSFRDL DLGPSLLSEL LGVMSLPEAP AAETPAPAAN PPAPTANPTG PAANPPATTA NPPAPAAATPT GPAANPPAPA ASSTPHGHCP NGVTAGLGPV AEVKSSPVGG GPRGPAGPAL GRHWGAGWDG GHHYPMDAR QERVEVLPQA RASWESLDEE WRAPQAGSRT PVPSTVQANT FEFADAEEDD EVKV
Clone:	3A4

Product Details

Isotype:	IgG1
Cross-Reactivity:	Human
Characteristics:	Antibody Reactive Against Recombinant Protein.

Target Details

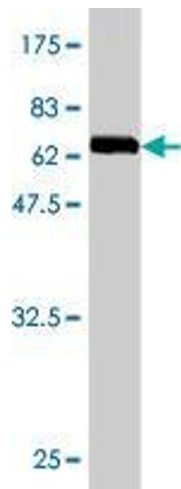
Target:	CDC42EP1
Alternative Name:	CDC42EP1 (CDC42EP1 Products)
Background:	Full Gene Name: CDC42 effector protein (Rho GTPase binding) 1 Synonyms: BORG5,CEP1,MGC15316,MSE55
Gene ID:	11135

Application Details

Application Notes:	Optimal working dilution should be determined by the investigator.
Restrictions:	For Research Use only

Handling

Buffer:	In 1x PBS, pH 7.4
Handling Advice:	Aliquot to avoid repeated freezing and thawing.
Storage:	-20 °C
Storage Comment:	Store at -20°C or lower. Aliquot to avoid repeated freezing and thawing.



Western Blotting

Image 1. Western Blot detection against Immunogen (67.98 kDa) .