



[Go to Product page](#)

Datasheet for ABIN564839
anti-HHLA3 antibody (AA 1-53)

3 Images

Overview

Quantity:	100 µg
Target:	HHLA3
Binding Specificity:	AA 1-53
Reactivity:	Human
Host:	Mouse
Clonality:	Monoclonal
Conjugate:	This HHLA3 antibody is un-conjugated
Application:	ELISA, Western Blotting (WB), Immunofluorescence (IF)

Product Details

Purpose:	Mouse monoclonal antibody raised against a partial recombinant HHLA3.
Immunogen:	HHLA3 (NP_009002, 1 a.a. ~ 53 a.a) partial recombinant protein with GST tag. MW of the GST tag alone is 26 KDa.
Sequence:	MFGACYKQPL KPSGSEPPAE ECRMTPRHAG CDVTEMQRIL SQPTFTEHLL RAV
Clone:	1F6
Isotype:	IgG2a
Cross-Reactivity:	Human
Characteristics:	Antibody Reactive Against Recombinant Protein.

Target Details

Target:	HHLA3
Alternative Name:	HHLA3 (HHLA3 Products)
Background:	Full Gene Name: HERV-H LTR-associating 3 Synonyms:
Gene ID:	11147
NCBI Accession:	NM_007071

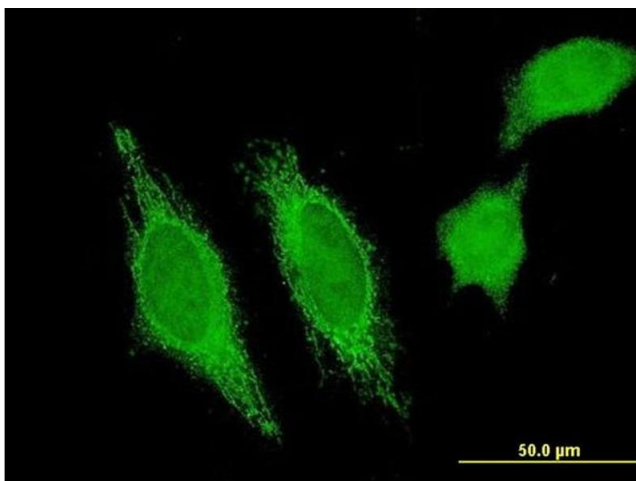
Application Details

Application Notes:	Optimal working dilution should be determined by the investigator.
Restrictions:	For Research Use only

Handling

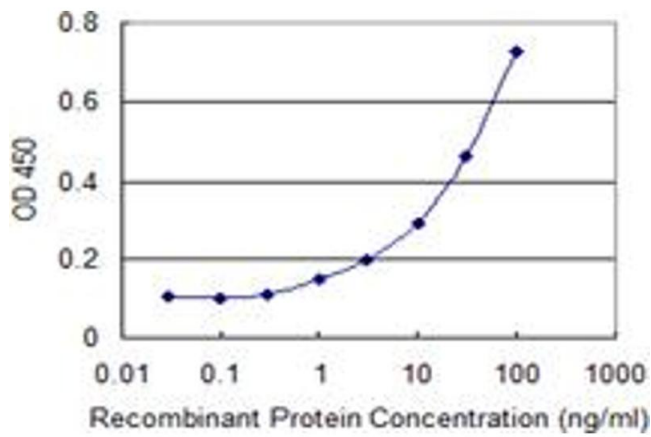
Buffer:	In 1x PBS, pH 7.4
Handling Advice:	Aliquot to avoid repeated freezing and thawing.
Storage:	-20 °C
Storage Comment:	Store at -20°C or lower. Aliquot to avoid repeated freezing and thawing.

Images



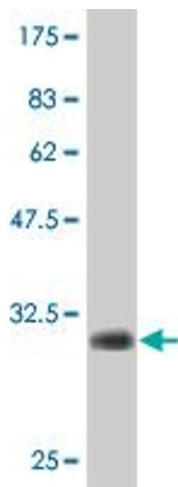
Immunofluorescence

Image 1. Immunofluorescence of monoclonal antibody to HHLA3 on HeLa cell. [antibody concentration 10 ug/ml]



ELISA

Image 2. Detection limit for recombinant GST tagged HHLA3 is 0.3 ng/ml as a capture antibody.



Western Blotting

Image 3. Western Blot detection against Immunogen (31.57 kDa).