



[Go to Product page](#)

Datasheet for ABIN564840
anti-BVES antibody (AA 262-360)

1 Image

Overview

Quantity:	50 µL
Target:	BVES
Binding Specificity:	AA 262-360
Reactivity:	Human
Host:	Mouse
Clonality:	Polyclonal
Conjugate:	This BVES antibody is un-conjugated
Application:	Western Blotting (WB), ELISA

Product Details

Purpose:	Mouse polyclonal antibody raised against a partial recombinant BVES.
Immunogen:	BVES (NP_009004, 262 a.a. ~ 360 a.a) partial recombinant protein with GST tag.
Sequence:	YSLNDPTLND KKAKKLEHQL SLCTQISMLE MRNSIASSSD SDDGLHQFLR GTSSMSSLHV SSPHQRASAK MKPIEEGAED DDDVFEPASP NTLKVHQLP
Cross-Reactivity:	Human
Characteristics:	Antibody Reactive Against Recombinant Protein.

Target Details

Target:	BVES
Alternative Name:	BVES (BVES Products)

Target Details

Background: Full Gene Name: blood vessel epicardial substance
Synonyms: HBVES,MGC42413,POP1,POPDC1

Gene ID: 11149

NCBI Accession: [NM_007073](#)

Application Details

Application Notes: Optimal working dilution should be determined by the investigator.

Restrictions: For Research Use only

Handling

Format: Liquid

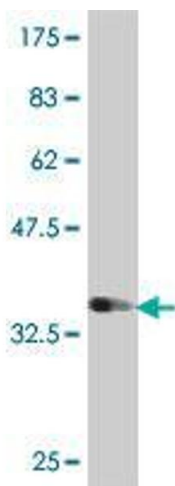
Buffer: 50 % glycerol

Handling Advice: Aliquot to avoid repeated freezing and thawing.

Storage: -20 °C

Storage Comment: Store at -20°C or lower. Aliquot to avoid repeated freezing and thawing.

Images



Western Blotting

Image 1. Western Blot detection against Immunogen (37 KDa) .