



[Go to Product page](#)

Datasheet for ABIN564841
anti-BVES antibody (AA 262-360)

4 Images

Overview

Quantity:	100 µg
Target:	BVES
Binding Specificity:	AA 262-360
Reactivity:	Human
Host:	Mouse
Clonality:	Monoclonal
Conjugate:	This BVES antibody is un-conjugated
Application:	Western Blotting (WB), ELISA

Product Details

Purpose:	Mouse monoclonal antibody raised against a partial recombinant BVES.
Immunogen:	BVES (NP_009004, 262 a.a. ~ 360 a.a) partial recombinant protein with GST tag. MW of the GST tag alone is 26 KDa.
Sequence:	YSLNDPTLND KKAKKLEHQL SLCTQISMLE MRNSIASSSD SDDGLHQFLR GTSSMSSLHV SSPHQRASAK MKPIEEGAED DDDVFEPASP NTLKVHQLP
Clone:	3F7
Isotype:	IgG2a
Cross-Reactivity:	Human, Rat
Characteristics:	Antibody Reactive Against Recombinant Protein.

Target Details

Target:	BVES
Alternative Name:	BVES (BVES Products)
Background:	Full Gene Name: blood vessel epicardial substance Synonyms: HBVES,MGC42413,POP1,POPDC1
Gene ID:	11149
NCBI Accession:	NM_007073

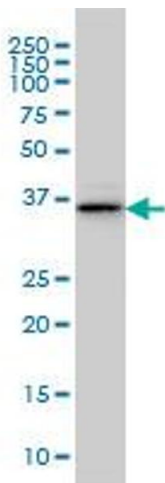
Application Details

Application Notes:	Optimal working dilution should be determined by the investigator.
Restrictions:	For Research Use only

Handling

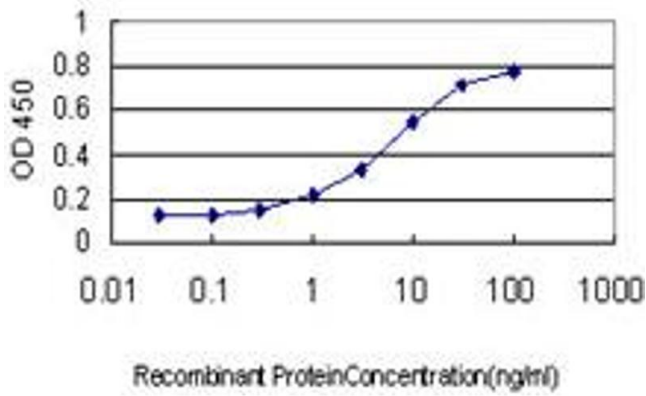
Buffer:	In 1x PBS, pH 7.4
Handling Advice:	Aliquot to avoid repeated freezing and thawing.
Storage:	-20 °C
Storage Comment:	Store at -20°C or lower. Aliquot to avoid repeated freezing and thawing.

Images



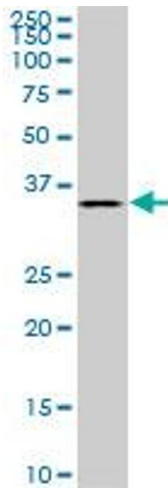
Western Blotting

Image 1. BVES monoclonal antibody (M02), clone 3F7
Western Blot analysis of BVES expression in IMR-32 .



ELISA

Image 2. Detection limit for recombinant GST tagged BVES is approximately 0.1 ng/ml as a capture antibody.



Western Blotting

Image 3. BVES monoclonal antibody (M02), clone 3F7. Western Blot analysis of BVES expression in PC-12 .

Please check the [product details page](#) for more images. Overall 4 images are available for ABIN564841.