

Datasheet for ABIN564864
anti-WIF1 antibody (AA 29-138)[Go to Product page](#)

1 Image

Overview

Quantity:	50 µL
Target:	WIF1
Binding Specificity:	AA 29-138
Reactivity:	Human
Host:	Mouse
Clonality:	Polyclonal
Conjugate:	This WIF1 antibody is un-conjugated
Application:	Western Blotting (WB), ELISA

Product Details

Purpose:	Mouse polyclonal antibody raised against a partial recombinant WIF1.
Immunogen:	WIF1 (NP_009122, 29 a.a. ~ 138 a.a) partial recombinant protein with GST tag.
Sequence:	GPPQEESLYL WIDAHQARVL IGFEEDILIV SEGKMAPFTH DFRKAQQRMP AIPVNIHSMN FTWQAAGQAE YFYEFSLRS LDKGIMADPT VNVPLLGTVP HKASVVQVGF
Cross-Reactivity:	Human
Characteristics:	Antibody Reactive Against Recombinant Protein.

Target Details

Target:	WIF1
Alternative Name:	WIF1 (WIF1 Products)

Target Details

Background:	Full Gene Name: WNT inhibitory factor 1 Synonyms: WIF-1
Gene ID:	11197
NCBI Accession:	NM_007191
Pathways:	WNT Signaling , Positive Regulation of fat Cell Differentiation

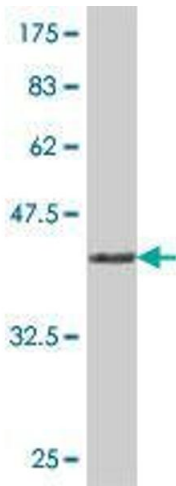
Application Details

Application Notes:	Optimal working dilution should be determined by the investigator.
Restrictions:	For Research Use only

Handling

Format:	Liquid
Buffer:	50 % glycerol
Handling Advice:	Aliquot to avoid repeated freezing and thawing.
Storage:	-20 °C
Storage Comment:	Store at -20°C or lower. Aliquot to avoid repeated freezing and thawing.

Images



Western Blotting

Image 1. Western Blot detection against Immunogen (38.21 KDa) .