

Datasheet for ABIN5648732
anti-BLM antibody (pThr99)[Go to Product page](#)

2 Images

Overview

Quantity:	100 µL
Target:	BLM
Binding Specificity:	pThr99
Reactivity:	Human, Mouse, Rat
Host:	Rabbit
Clonality:	Polyclonal
Conjugate:	This BLM antibody is un-conjugated
Application:	Western Blotting (WB), Immunohistochemistry (Paraffin-embedded Sections) (IHC (p))

Product Details

Purpose:	Rabbit polyclonal antibody raised against synthetic phosphopeptide of human BLM.
Immunogen:	Synthetic phosphopeptide (conjugated with KLH) corresponding to residues surrounding T99 of human BLM.
Specificity:	BLM (phospho T99) polyclonal antibody detects endogenous levels of human BLM only when phosphorylated at threonine 99.
Cross-Reactivity:	Human, Mouse, Rat
Cross-Reactivity (Details):	BLM (phospho T99) polyclonal antibody detects endogenous levels of human BLM only when phosphorylated at threonine 99.

Target Details

Target:	BLM
---------	-----

Target Details

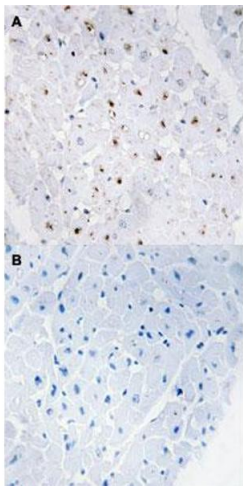
Alternative Name:	BLM (BLM Products)
Background:	Full Gene Name: Bloom syndrome Synonyms: BS,MGC126616,MGC131618,MGC131620,RECQ2,RECQL2,RECQL3
Gene ID:	641
Pathways:	DNA Damage Repair

Application Details

Application Notes:	Immunohistochemistry (1:50~1:100) Western Blot (1:500~1:1000) The optimal working dilution should be determined by the end user.
Restrictions:	For Research Use only

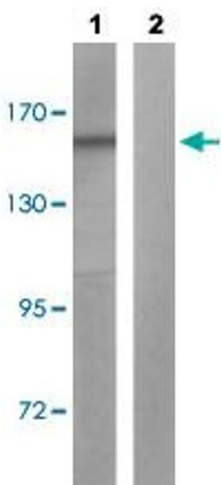
Handling

Format:	Liquid
Buffer:	In PBS (without Mg^{2+} and Ca^{2+}), 150 mM NaCl, pH 7.4 (50 % glycerol, 0.02 % sodium azide)
Preservative:	Sodium azide
Precaution of Use:	This product contains Sodium azide: a POISONOUS AND HAZARDOUS SUBSTANCE which should be handled by trained staff only.
Storage:	-20 °C
Storage Comment:	Store at -20°C. Aliquot to avoid repeated freezing and thawing.



Immunohistochemistry

Image 1. Immunohistochemical staining (Formalin-fixed paraffin-embedded sections) of human heart tissue with BLM (phospho T99) polyclonal antibody without blocking peptide (A) or preincubated with blocking peptide (B) under 1:50-1:100 dilution.



Western Blotting

Image 2. Western blot analysis of Lane 1: HepG2 cells, Lane 2: antigen-specific peptide treated HepG2 cells with BLM (phospho T99) polyclonal antibody at 1:500-1:1000 dilution.