

Datasheet for ABIN5648767

**anti-BRS3 antibody**[Go to Product page](#)**1** Image

## Overview

Quantity:	50 µg
Target:	BRS3
Reactivity:	Human, Mouse, Rat, Gorilla, Cow, Dog, Guinea Pig, Hamster, Horse
Host:	Rabbit
Clonality:	Polyclonal
Conjugate:	This BRS3 antibody is un-conjugated
Application:	Immunohistochemistry (Paraffin-embedded Sections) (IHC (p))

## Product Details

Purpose:	Rabbit polyclonal antibody raised against synthetic peptide of BRS3.
Immunogen:	A synthetic peptide (conjugated with KLH) corresponding to human BRS3.
Specificity:	3rd Cytoplasmic domain of human.
Cross-Reactivity:	Cow, Dog, Gorilla, Guinea Pig, Hamster, Horse, Human, Mouse, Rat
Cross-Reactivity (Details):	3rd Cytoplasmic domain of human.

## Target Details

Target:	BRS3
Alternative Name:	BRS3 ( <a href="#">BRS3 Products</a> )
Background:	Full Gene Name: bombesin-like receptor 3
Gene ID:	680

## Target Details

Pathways: [Feeding Behaviour](#)

## Application Details

Application Notes: Immunohistochemistry (Formalin/PFA-fixed paraffin-embedded sections) (10 µg/mL)  
The optimal working dilution should be determined by the end user.

Restrictions: For Research Use only

## Handling

Format: Liquid

Buffer: In PBS (0.09 % sodium azide)

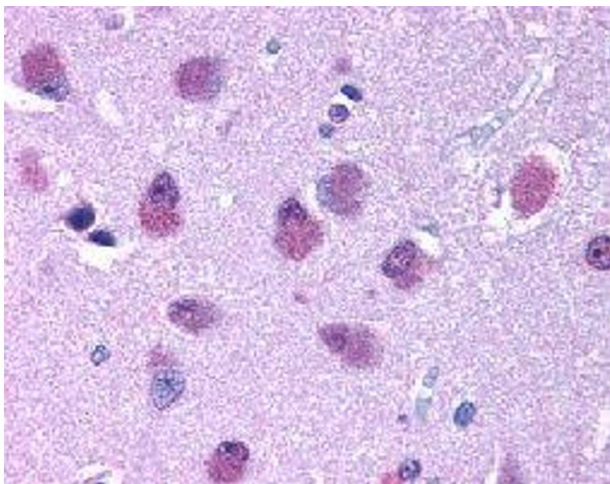
Preservative: Sodium azide

Precaution of Use: This product contains Sodium azide: a POISONOUS AND HAZARDOUS SUBSTANCE which should be handled by trained staff only.

Storage: 4 °C, -80 °C

Storage Comment: Store at 4°C. For long term storage store at -80°C.  
Aliquot to avoid repeated freezing and thawing.

## Images



### Immunohistochemistry

**Image 1.** Immunohistochemical (Formalin/PFA-fixed paraffin-embedded sections) staining in human brain with BRS3 polyclonal antibody .