

Datasheet for ABIN5648769

anti-BRS3 antibody**1** Image[Go to Product page](#)

Overview

Quantity:	50 µg
Target:	BRS3
Reactivity:	Human, Mouse, Rat, Gorilla, Monkey, Cow, Dog, Guinea Pig, Hamster, Horse, Rabbit, Sheep
Host:	Rabbit
Clonality:	Polyclonal
Conjugate:	This BRS3 antibody is un-conjugated
Application:	Immunohistochemistry (Paraffin-embedded Sections) (IHC (p))

Product Details

Purpose:	Rabbit polyclonal antibody raised against synthetic peptide of BRS3.
Immunogen:	A synthetic peptide (conjugated with KLH) corresponding to human BRS3.
Specificity:	1st Cytoplasmic domain of human.
Cross-Reactivity:	Cow, Dog, Gorilla, Guinea Pig, Hamster, Horse, Human, Monkey, Mouse, Rabbit, Rat, Sheep
Cross-Reactivity (Details):	1st Cytoplasmic domain of human.

Target Details

Target:	BRS3
Alternative Name:	BRS3 (BRS3 Products)
Background:	Full Gene Name: bombesin-like receptor 3
Gene ID:	680

Target Details

Pathways: [Feeding Behaviour](#)

Application Details

Application Notes: Immunohistochemistry (Formalin/PFA-fixed paraffin-embedded sections) (10 µg/mL)
The optimal working dilution should be determined by the end user.

Restrictions: For Research Use only

Handling

Format: Liquid

Buffer: In PBS (0.09 % sodium azide)

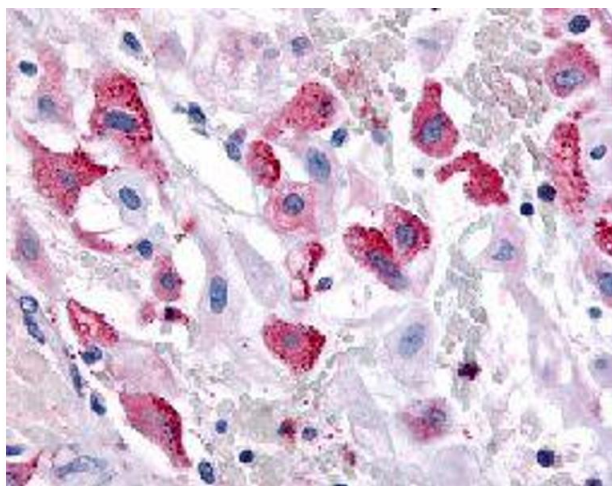
Preservative: Sodium azide

Precaution of Use: This product contains Sodium azide: a POISONOUS AND HAZARDOUS SUBSTANCE which should be handled by trained staff only.

Storage: 4 °C, -80 °C

Storage Comment: Store at 4°C. For long term storage store at -80°C.
Aliquot to avoid repeated freezing and thawing.

Images



Immunohistochemistry

Image 1. Immunohistochemical (Formalin/PFA-fixed paraffin-embedded sections) staining in human pregnant uterus with BRS3 polyclonal antibody .