



[Go to Product page](#)

Datasheet for ABIN5648774
anti-KRT6A antibody (C-Term)

1 Image

Overview

Quantity:	100 µg
Target:	KRT6A
Binding Specificity:	C-Term
Reactivity:	Human
Host:	Mouse
Clonality:	Monoclonal
Conjugate:	This KRT6A antibody is un-conjugated
Application:	Immunofluorescence (IF), Flow Cytometry (FACS), Immunohistochemistry (Paraffin-embedded Sections) (IHC (p))

Product Details

Purpose:	Mouse monoclonal antibody raised against synthetic peptide of human KRT6.
Immunogen:	A synthetic peptide corresponding to 11 residues at C-terminus of human KRT6.
Sequence:	GSSTIKYTTT S
Clone:	SPM269
Isotype:	IgG2a
Cross-Reactivity:	Human

Target Details

Target:	KRT6A
---------	-------

Target Details

Alternative Name:	KRT6A (KRT6A Products)
Background:	Full Gene Name: keratin 6A Synonyms: CK6A,CK6C,CK6D,K6A,K6C,K6D,KRT6C,KRT6D
Gene ID:	3853, 3854, 286887

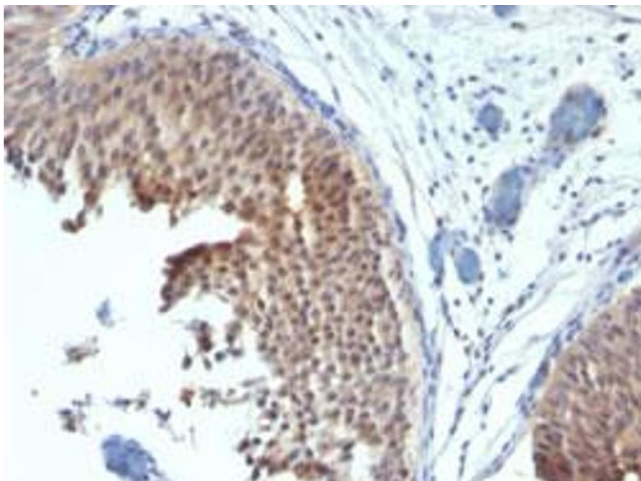
Application Details

Application Notes:	Flow Cytometry (0.5-1 $\mu\text{g}/10^6$ cells in 0.1 mL) Immunofluorescence (0.5-1 $\mu\text{g}/\text{mL}$) Immunohistochemistry (Formalin/PFA-fixed paraffin-embedded sections) (0.1-0.2 $\mu\text{g}/\text{mL}$) The optimal working dilution should be determined by the end user.
Restrictions:	For Research Use only

Handling

Format:	Liquid
Buffer:	In 10 mM PBS (0.05 % BSA, 0.05 % sodium azide).
Preservative:	Sodium azide
Precaution of Use:	This product contains Sodium azide: a POISONOUS AND HAZARDOUS SUBSTANCE which should be handled by trained staff only.
Storage:	4 °C
Storage Comment:	Store at 4°C.

Images



Immunohistochemistry

Image 1. Immunohistochemical staining (Formalin-fixed paraffin-embedded sections) of human bladder carcinoma with KRT6 monoclonal antibody, clone SPM269 .