

Datasheet for ABIN5648783
anti-C1orf64 antibody (C-Term)[Go to Product page](#)

1 Image

Overview

Quantity:	100 µg
Target:	C1orf64 (C1ORF64)
Binding Specificity:	C-Term
Reactivity:	Human, Mouse
Host:	Rabbit
Clonality:	Polyclonal
Conjugate:	This C1orf64 antibody is un-conjugated
Application:	ELISA, Western Blotting (WB), Immunofluorescence (IF), Immunocytochemistry (ICC)

Product Details

Purpose:	Rabbit polyclonal antibody raised against synthetic peptide of C1orf64.
Immunogen:	A synthetic peptide corresponding to 15 amino acids at C-terminus of human C1orf64.
Isotype:	IgG
Cross-Reactivity:	Human, Mouse

Target Details

Target:	C1orf64 (C1ORF64)
Alternative Name:	C1orf64 (C1ORF64 Products)
Background:	Full Gene Name: chromosome 1 open reading frame 64 Synonyms: MGC24047,RP11-5P18.4

Target Details

Gene ID: 149563

Application Details

Application Notes: Western Blot (1 µg/mL)
Immunocytochemistry (2.5 µg/mL)
Immunofluorescence (20 µg/mL)
The optimal working dilution should be determined by the end user.

Restrictions: For Research Use only

Handling

Format: Liquid

Concentration: 1 mg/mL

Buffer: In PBS (0.02 % sodium azide)

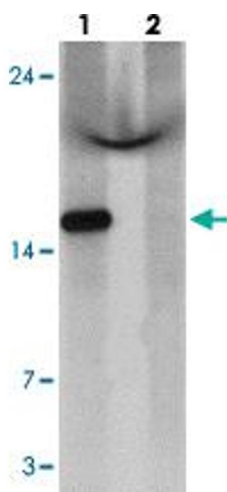
Preservative: Sodium azide

Precaution of Use: This product contains Sodium azide: a POISONOUS AND HAZARDOUS SUBSTANCE which should be handled by trained staff only.

Storage: 4 °C, -20 °C

Storage Comment: Store at 4°C for three months. For long term storage store at -20°C.
Aliquot to avoid repeated freezing and thawing.

Images



Western Blotting

Image 1. Western blot analysis of C1orf64 in HeLa cell lysate with C1orf64 polyclonal antibody at 1 ug/mL in (lane 1) the absence and (lane 2) the presence of blocking peptide.