



[Go to Product page](#)

Datasheet for ABIN5648814
anti-BCL9L antibody (N-Term)

2 Images

Overview

| | |
|----------------------|---|
| Quantity: | 100 µg |
| Target: | BCL9L |
| Binding Specificity: | N-Term |
| Reactivity: | Human, Mouse, Rat |
| Host: | Rabbit |
| Clonality: | Polyclonal |
| Conjugate: | This BCL9L antibody is un-conjugated |
| Application: | Western Blotting (WB), ELISA, Immunocytochemistry (ICC) |

Product Details

| | |
|-----------------------------|---|
| Purpose: | Rabbit polyclonal antibody raised against synthetic peptide of BCL9L. |
| Immunogen: | A synthetic peptide corresponding to 20 amino acids near N-terminus of human BCL9L. |
| Specificity: | BCL9L antibody is predicted to not cross-react with other Bcl family members. At least four isoforms of BCL9L are known to exist, this antibody will detect all four. |
| Cross-Reactivity: | Human, Mouse, Rat |
| Cross-Reactivity (Details): | BCL9L antibody is predicted to not cross-react with other Bcl family members. At least four isoforms of BCL9L are known to exist, this antibody will detect all four. |

Target Details

| | |
|---------|-------|
| Target: | BCL9L |
|---------|-------|

Target Details

| | |
|-------------------|---|
| Alternative Name: | BCL9L (BCL9L Products) |
| Background: | Full Gene Name: B-cell CLL/lymphoma 9-like Synonyms: BCL9-2,DLNB11 |
| Gene ID: | 283149 |
| Pathways: | Stem Cell Maintenance |

Application Details

| | |
|--------------------|--|
| Application Notes: | Western Blot (1 µg/mL) Immunocytochemistry (10 µg/mL) The optimal working dilution should be determined by the end user. |
| Restrictions: | For Research Use only |

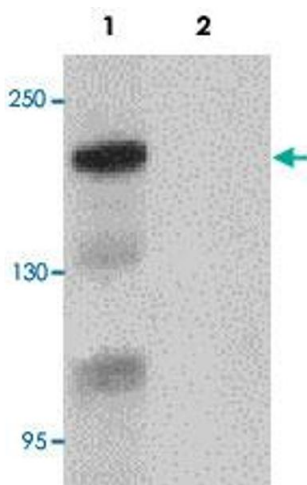
Handling

| | |
|--------------------|---|
| Format: | Liquid |
| Concentration: | 1 mg/mL |
| Buffer: | In PBS (0.02 % sodium azide) |
| Preservative: | Sodium azide |
| Precaution of Use: | This product contains Sodium azide: a POISONOUS AND HAZARDOUS SUBSTANCE which should be handled by trained staff only. |
| Storage: | 4 °C,-20 °C |
| Storage Comment: | Store at 4°C for three months. For long term storage store at -20°C. Aliquot to avoid repeated freezing and thawing. |



Immunocytochemistry

Image 1. Immunocytochemical staining of HeLa cells with BCL9L polyclonal antibody at 10 ug/mL.



Western Blotting

Image 2. Western blot analysis of Bcl9L in HeLa cell lysate with BCL9L polyclonal antibody at 1 ug/mL. Lane 1 : The absence of blocking peptide. Lane 2 : The presence of blocking peptide.