



[Go to Product page](#)

Datasheet for ABIN5648890  
**anti-RUNX1 antibody (C-Term)**

3 Images

Overview

Quantity:	100 µL
Target:	RUNX1
Binding Specificity:	C-Term
Reactivity:	Human
Host:	Mouse
Clonality:	Monoclonal
Conjugate:	This RUNX1 antibody is un-conjugated
Application:	Western Blotting (WB), ELISA, Immunofluorescence (IF)

Product Details

Purpose:	Mouse monoclonal antibody raised against synthetic peptide of human RUNX1.
Immunogen:	A synthetic peptide corresponding to C-terminus of human RUNX1.
Clone:	5A1
Cross-Reactivity:	Human

Target Details

Target:	RUNX1
Alternative Name:	RUNX1 ( <a href="#">RUNX1 Products</a> )
Background:	Full Gene Name: runt-related transcription factor 1 Synonyms: AML1,AML1-EVI-1,AMLCR1,CBFA2,EVI-1,PEBP2aB

## Target Details

Gene ID: 861

## Application Details

Application Notes: ELISA (1:10000)  
Immunofluorescence (1:200-1:1000)  
Western Blot (1:500-1:2000)  
The optimal working dilution should be determined by the end user.

Restrictions: For Research Use only

## Handling

Format: Liquid

Buffer: In ascitic fluid (0.03 % sodium azide).

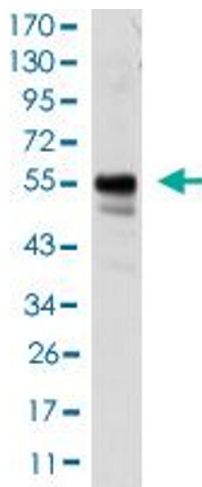
Preservative: Sodium azide

Precaution of Use: This product contains Sodium azide: a POISONOUS AND HAZARDOUS SUBSTANCE which should be handled by trained staff only.

Storage: -20 °C

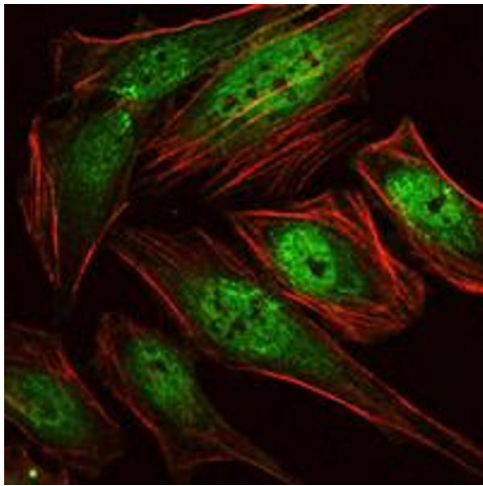
Storage Comment: Store at -20°C.  
Aliquot to avoid repeated freezing and thawing.

## Images



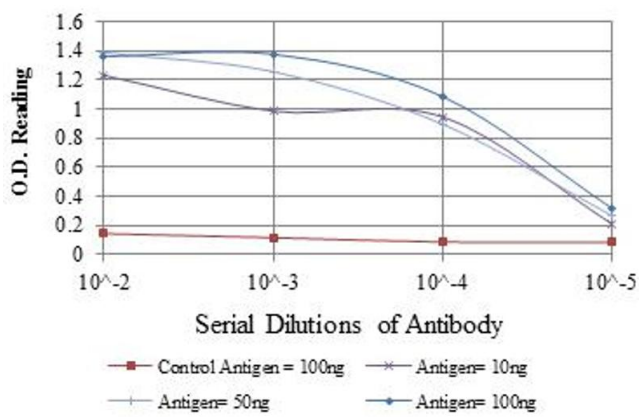
### Western Blotting

**Image 1.** Western Blot analysis of Jurkat cell.



### Immunofluorescence

**Image 2.** Immunofluorescence staining of HeLa cells using RUNX1 monoclonal antibody, clone 5A1 (Green). Red: Actin filaments have been labeled with Alexa Fluor-555 phalloidin.



### ELISA

**Image 3.** ELISA analysis of RUNX1 monoclonal antibody, clone 5A1.