

Datasheet for ABIN5648891
anti-TUBB3 antibody (C-Term)[Go to Product page](#)

3 Images

Overview

Quantity:	100 µL
Target:	TUBB3
Binding Specificity:	C-Term
Reactivity:	Human, Mouse, Rat, Rabbit, Chicken, Sheep
Host:	Mouse
Clonality:	Monoclonal
Conjugate:	This TUBB3 antibody is un-conjugated
Application:	Western Blotting (WB), Immunohistochemistry (Paraffin-embedded Sections) (IHC (p)), Immunofluorescence (IF)

Product Details

Purpose:	Mouse monoclonal antibody raised against synthetic peptide of human TUBB3.
Immunogen:	A synthetic peptide corresponding to C-terminus of human TUBB3.
Clone:	5G3
Isotype:	IgG1
Cross-Reactivity:	Chicken, Human, Mouse, Rabbit, Rat, Sheep

Target Details

Target:	TUBB3
Alternative Name:	TUBB3 (TUBB3 Products)

Target Details

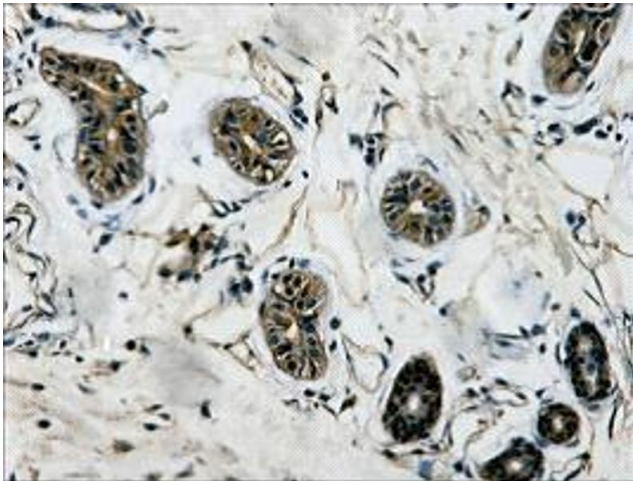
Background:	Full Gene Name: tubulin, beta 3
	Synonyms: MC1R,TUBB4,beta-4
Gene ID:	10381
Pathways:	Microtubule Dynamics , M Phase

Application Details

Application Notes:	Immunofluorescence
	Immunohistochemistry (Formalin/PFA-fixed paraffin-embedded sections) (1:200)
	Western Blot (1:5000)
	The optimal working dilution should be determined by the end user.
Restrictions:	For Research Use only

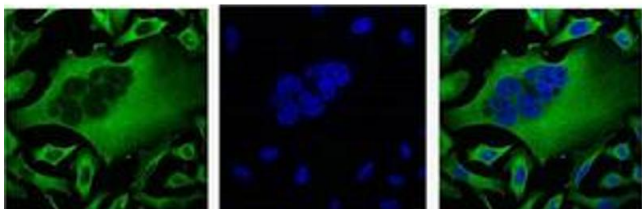
Handling

Format:	Liquid
Buffer:	In PBS (50 % glycerol, 0.5 % BSA, 0.02 % sodium azide).
Preservative:	Sodium azide
Precaution of Use:	This product contains Sodium azide: a POISONOUS AND HAZARDOUS SUBSTANCE which should be handled by trained staff only.
Storage:	-20 °C
Storage Comment:	Store at -20°C.
	Aliquot to avoid repeated freezing and thawing.



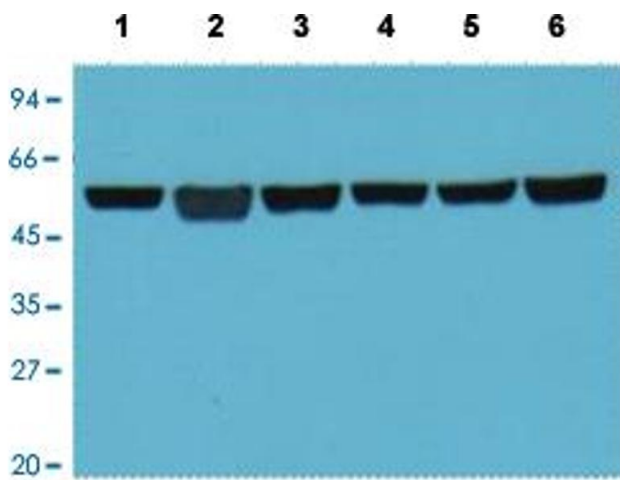
Immunohistochemistry

Image 1. Immunohistochemical staining (Formalin-fixed paraffin-embedded sections) of human colon tissue.



Immunofluorescence

Image 2. Immunofluorescence staining of HeLa cell line with antibody (Left), DAPI (Middle) and merge (Right).



Western Blotting

Image 3. Western Blot analysis of Lane 1: A549 cell, Lane 2: rat brain tissue, Lane 3: mouse brain tissue, Lane 4: chicken lung tissue, Lane 5: rabbit testis tissue and Lane 6: sheep muscle tissue.