



[Go to Product page](#)

Datasheet for ABIN5648920

## anti-LAMP1 antibody

### 2 Images

#### Overview

Quantity:	100 µL
Target:	LAMP1
Reactivity:	Human
Host:	Mouse
Clonality:	Monoclonal
Conjugate:	This LAMP1 antibody is un-conjugated
Application:	Western Blotting (WB), Immunohistochemistry (Paraffin-embedded Sections) (IHC (p))

#### Product Details

Purpose:	Mouse monoclonal antibody raised against synthetic peptide of human LAMP1.
Immunogen:	A synthetic peptide corresponding to human LAMP1.
Sequence:	EIKTVESITD IRADIDKKYR
Clone:	CL4463
Isotype:	IgG3
Cross-Reactivity:	Human

#### Target Details

Target:	LAMP1
Alternative Name:	LAMP1 ( <a href="#">LAMP1 Products</a> )
Background:	Full Gene Name: lysosomal-associated membrane protein 1

## Target Details

Synonyms: CD107a,LAMPA,LGP120

Gene ID: 3916

Pathways: [Autophagy](#)

## Application Details

Application Notes: Immunohistochemistry (Formalin/PFA-fixed paraffin-embedded sections) (1:2500-1:5000)  
Western Blot (1:500-1:1000)  
The optimal working dilution should be determined by the end user.

Restrictions: For Research Use only

## Handling

Format: Liquid

Buffer: In PBS, pH 7.2 (40 % glycerol, 0.02 % sodium azide).

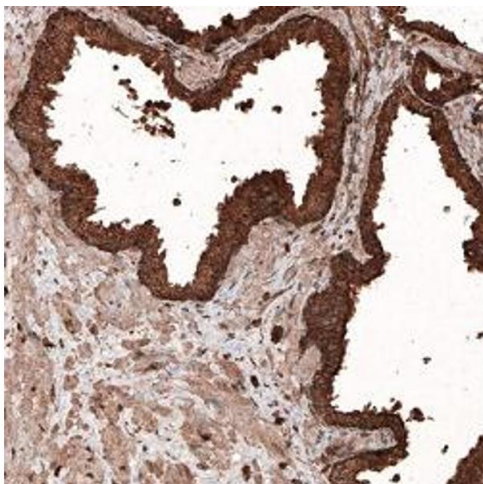
Preservative: Sodium azide

Precaution of Use: This product contains Sodium azide: a POISONOUS AND HAZARDOUS SUBSTANCE which should be handled by trained staff only.

Storage: 4 °C,-20 °C

Storage Comment: Store at 4°C. For long term storage store at -20°C.  
Aliquot to avoid repeated freezing and thawing.

## Images



### Immunohistochemistry

**Image 1.** Immunohistochemical staining (Formalin-fixed paraffin-embedded sections) of human prostate shows strong granular cytoplasmic immunoreactivity in glandular cells and moderate positivity in smooth muscle.



### Western Blotting

**Image 2.** Western Blot (Cell lysate) analysis of RT-4 cell lysate.