

Datasheet for ABIN5648922

anti-PPIB antibody

3 Images

[Go to Product page](#)

Overview

Quantity:	100 µL
Target:	PPIB
Reactivity:	Human, Mouse, Rat
Host:	Mouse
Clonality:	Monoclonal
Conjugate:	This PPIB antibody is un-conjugated
Application:	Western Blotting (WB), Immunohistochemistry (Paraffin-embedded Sections) (IHC (p)), RNA Interference (RNAi)

Product Details

Purpose:	Mouse monoclonal antibody raised against synthetic peptide of human PPIB.
Immunogen:	A synthetic peptide corresponding to human PPIB.
Sequence:	TKTDSRDKPL KDVIIADCGK IEVEKPFAIA KE
Clone:	CL3901
Isotype:	IgG2a
Cross-Reactivity:	Human, Mouse, Rat

Target Details

Target:	PPIB
Alternative Name:	PPIB (PPIB Products)

Target Details

Background:	Full Gene Name: peptidylprolyl isomerase B (cyclophilin B) Synonyms: CYP-S1,CYPB,MGC14109,MGC2224,SCYLP
Gene ID:	5479

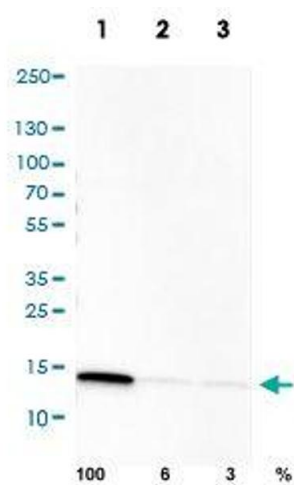
Application Details

Application Notes:	Immunohistochemistry (Formalin/PFA-fixed paraffin-embedded sections) (1:5000-1:10000) Western Blot (1:500-1:1000) The optimal working dilution should be determined by the end user.
Restrictions:	For Research Use only

Handling

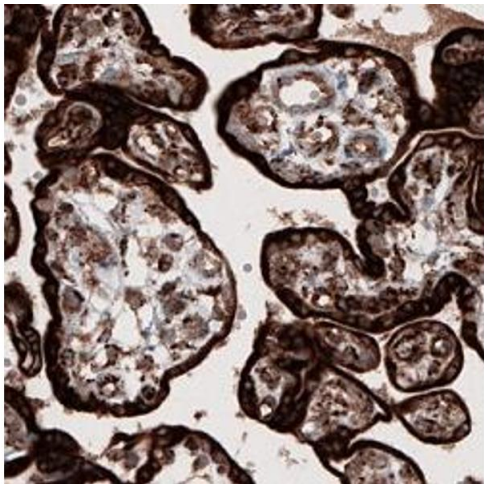
Format:	Liquid
Buffer:	In PBS, pH 7.2 (40 % glycerol, 0.02 % sodium azide).
Preservative:	Sodium azide
Precaution of Use:	This product contains Sodium azide: a POISONOUS AND HAZARDOUS SUBSTANCE which should be handled by trained staff only.
Storage:	4 °C,-20 °C
Storage Comment:	Store at 4°C. For long term storage store at -20°C. Aliquot to avoid repeated freezing and thawing.

Images



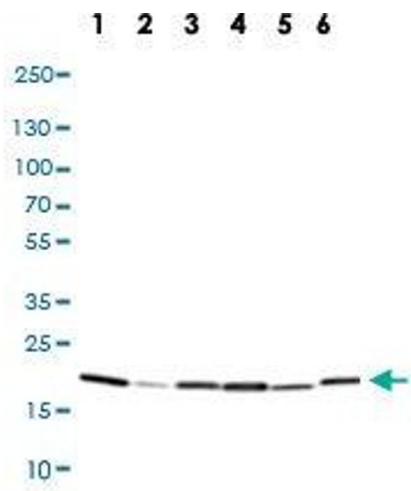
Western Blotting

Image 1. Western Blot analysis of U-251cell transfected with (1) control siRNA, (2) target specific siRNA probe #1, (3) target specific siRNA probe #2 using PPIB monoclonal antibody, clone CL3901. Downregulation of antibody signal confirms target specificity. Remaining % intensity, relative control lane, is indicated. GAPDH monoclonal antibody was used as loading control.



Immunohistochemistry

Image 2. Immunohistochemical staining (Formalin-fixed paraffin-embedded sections) of human placenta shows strong cytoplasmic immunoreactivity in trophoblasts.



Western Blotting

Image 3. Western Blot (Cell lysate) analysis of (1) human HeLa cell, (2) human HEK 293 cell, (3) human A-431 cell, (4) human HepG2 cell, (6) mouse NIH-3T3 cell, (7) rat cell line NBT-II.