

Datasheet for ABIN5648981

anti-Myosin Heavy Chain antibody (N-Term)[Go to Product page](#)**1** Image

Overview

| | |
|----------------------|---|
| Quantity: | 100 µL |
| Target: | Myosin Heavy Chain |
| Binding Specificity: | N-Term |
| Reactivity: | Human, Nematode |
| Host: | Mouse |
| Clonality: | Monoclonal |
| Conjugate: | This Myosin Heavy Chain antibody is un-conjugated |
| Application: | Immunofluorescence (IF) |

Product Details

| | |
|-------------------|---|
| Purpose: | Mouse monoclonal antibody raised against synthetic peptide of human myosin heavy chain. |
| Immunogen: | A synthetic peptide corresponding to N-terminus of human myosin heavy chain. |
| Clone: | 11C2 |
| Isotype: | IgG1 |
| Cross-Reactivity: | Human, Nematode |

Target Details

| | |
|-----------|---|
| Target: | Myosin Heavy Chain |
| Abstract: | Myosin Heavy Chain Products |

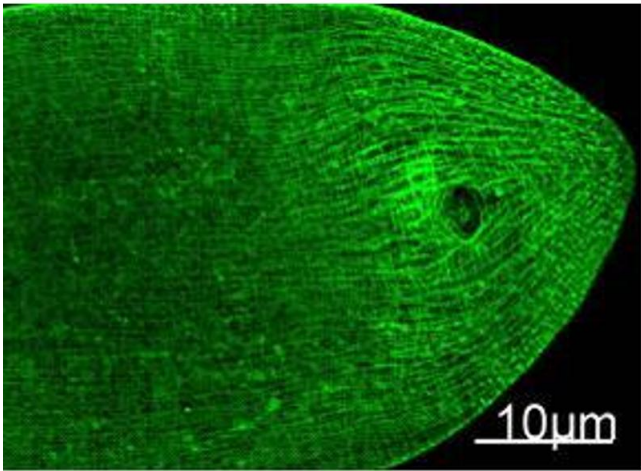
Application Details

| | |
|--------------------|--|
| Application Notes: | Immunofluorescence (1:100) The optimal working dilution should be determined by the end user. |
| Restrictions: | For Research Use only |

Handling

| | |
|--------------------|--|
| Format: | Liquid |
| Buffer: | In PBS (50 % glycerol, 0.5 % BSA, 0.02 % sodium azide). |
| Preservative: | Sodium azide |
| Precaution of Use: | This product contains Sodium azide: a POISONOUS AND HAZARDOUS SUBSTANCE which should be handled by trained staff only. |
| Storage: | -20 °C |
| Storage Comment: | Store at -20°C. Aliquot to avoid repeated freezing and thawing. |

Images



Immunofluorescence

Image 1. Immunofluorescence staining of nematode tissue.