



Datasheet for ABIN5649020

anti-BrdU antibody



[Go to Product page](#)

1 Image

Overview

Quantity:	100 µg
Target:	BrdU
Reactivity:	Human
Host:	Mouse
Clonality:	Monoclonal
Conjugate:	This BrdU antibody is un-conjugated
Application:	Immunohistochemistry (Paraffin-embedded Sections) (IHC (p)), Western Blotting (WB)

Product Details

Purpose:	Mouse monoclonal antibody raised against Bromodeoxyuridine.
Immunogen:	Bromodeoxyuridine (BrdU) conjugated to KLH.
Clone:	SPM166
Isotype:	IgG1

Target Details

Target:	BrdU
Alternative Name:	BrdU (BrdU Products)
Target Type:	Chemical

Application Details

Application Notes: Immunohistochemistry (0.5-1 µg/mL)
Western Blot (0.5-1 µg/mL)
The optimal working dilution should be determined by the end user.

Restrictions: For Research Use only

Handling

Format: Liquid

Buffer: In PBS (0.05 % BSA, 0.05 % sodium azide).

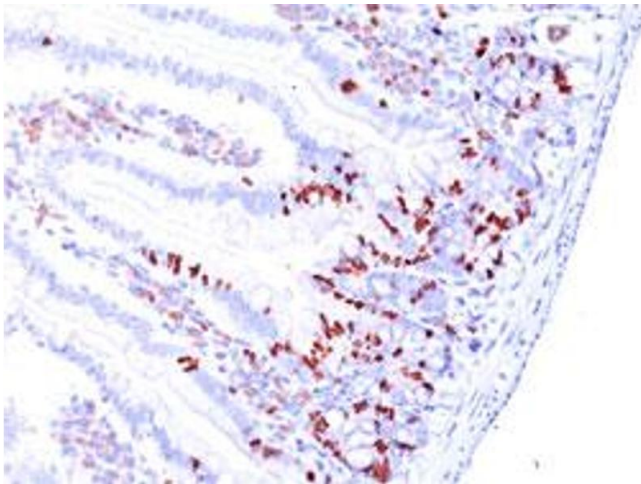
Preservative: Sodium azide

Precaution of Use: This product contains Sodium azide: a POISONOUS AND HAZARDOUS SUBSTANCE which should be handled by trained staff only.

Storage: 4 °C

Storage Comment: Store at 4°C.
Aliquot to avoid repeated freezing and thawing.

Images



Immunohistochemistry

Image 1. Immunohistochemical staining (Formalin-fixed paraffin-embedded sections) of mouse intestine with BrdU monoclonal antibody, clone SPM166 .