

Datasheet for ABIN5649023

anti-BrdU antibody[Go to Product page](#)**1** Image

Overview

Quantity:	100 µg
Target:	BrdU
Reactivity:	Human
Host:	Mouse
Clonality:	Monoclonal
Conjugate:	This BrdU antibody is un-conjugated
Application:	Immunohistochemistry (IHC), Flow Cytometry (FACS), Immunofluorescence (IF)

Product Details

Purpose:	mouse monoclonal antibody raised against BrdU.
Immunogen:	Bromodeoxyuridine (BrdU) conjugated with KLH.
Clone:	BRD494
Isotype:	IgG1

Target Details

Target:	BrdU
Alternative Name:	Bromodeoxyuridine (BrdU Products)
Target Type:	Chemical

Application Details

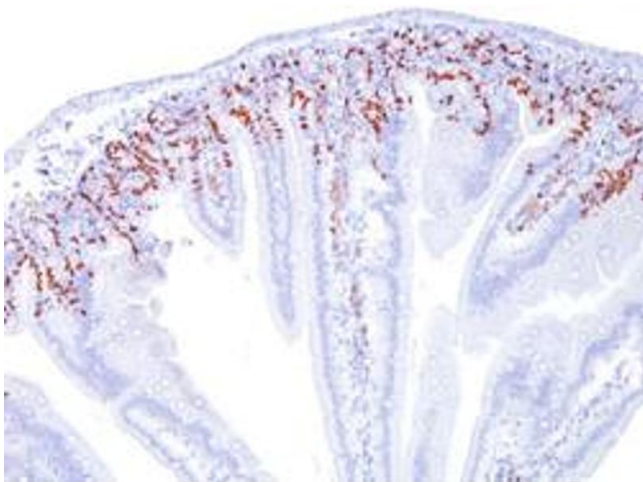
Application Notes:	Flow Cytometry (0.5-1 µg/million cells) Immunofluorescence (0.5-1 µg/mL) Immunohistochemistry (0.5-1 µg/mL for 30 min at RT) The optimal working dilution should be determined by the end user.
--------------------	--

Restrictions:	For Research Use only
---------------	-----------------------

Handling

Format:	Liquid
Buffer:	In PBS (0.05 % BSA, 0.05 % sodium azide)
Preservative:	Sodium azide
Precaution of Use:	This product contains Sodium azide: a POISONOUS AND HAZARDOUS SUBSTANCE which should be handled by trained staff only.
Storage:	4 °C
Storage Comment:	Store at 4°C.

Images



Immunohistochemistry

Image 1. Immunohistochemical staining of mouse intestine with Bromodeoxyuridine monoclonal antibody, clone BRD494 at 0.5-1 ug/mL for 30 min at RT.