



[Go to Product page](#)

Datasheet for ABIN564903

## anti-KLF12 antibody (AA 1-90)

### 1 Image

#### Overview

Quantity:	50 µL
Target:	KLF12
Binding Specificity:	AA 1-90
Reactivity:	Human
Host:	Mouse
Clonality:	Polyclonal
Conjugate:	This KLF12 antibody is un-conjugated
Application:	Western Blotting (WB), ELISA

#### Product Details

Purpose:	Mouse polyclonal antibody raised against a partial recombinant KLF12.
Immunogen:	KLF12 (NP_009180, 1 a.a. ~ 90 a.a) partial recombinant protein with GST tag.
Sequence:	MNIHMKRRTI KNINTFENRM LMLDGMPAVR VKTELLESEQ GSPNVHNYPD MEAVPLLLNN VKGPEPDSL SVDHFQTQTE PVDLSINKAR
Cross-Reactivity:	Human
Characteristics:	Antibody Reactive Against Recombinant Protein.

#### Target Details

Target:	KLF12
Alternative Name:	KLF12 ( <a href="#">KLF12 Products</a> )

## Target Details

Background: Full Gene Name: Kruppel-like factor 12  
Synonyms: AP-2rep,AP2REP,HSPC122

Gene ID: 11278

NCBI Accession: [NM\\_007249](#)

## Application Details

Application Notes: Optimal working dilution should be determined by the investigator.

Restrictions: For Research Use only

## Handling

Format: Liquid

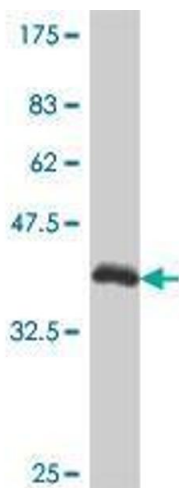
Buffer: 50 % glycerol

Handling Advice: Aliquot to avoid repeated freezing and thawing.

Storage: -20 °C

Storage Comment: Store at -20°C or lower. Aliquot to avoid repeated freezing and thawing.

## Images



### Western Blotting

**Image 1.** Western Blot detection against Immunogen (36.01 KDa) .