

Datasheet for ABIN5649244

anti-Bu-1 antibody (PE)[Go to Product page](#)**1** Image

Overview

Quantity:	100 µg
Target:	Bu-1
Reactivity:	Chicken
Host:	Mouse
Clonality:	Monoclonal
Conjugate:	This Bu-1 antibody is conjugated to PE
Application:	Flow Cytometry (FACS), Immunoprecipitation (IP), Immunohistochemistry (Frozen Sections) (IHC (fro))

Product Details

Purpose:	Mouse monoclonal antibody raised against native Bu-1.
Immunogen:	Native purified from Bursal cells from one-day-old H.B15 (Bu-1a/b) strain chickens.
Clone:	AV20
Isotype:	IgG1
Specificity:	Chicken Bu-1 (chB6), Mr 70-75 KDa.
Cross-Reactivity:	Chicken
Cross-Reactivity (Details):	Chicken Bu-1 (chB6), Mr 70-75 KDa.

Target Details

Target:	Bu-1
---------	------

Target Details

Abstract: [Bu-1 Products](#)

Application Details

Application Notes: Flow Cytometry (0.2 µg/10⁶ cells)
The optimal working dilution should be determined by the end user.

Restrictions: For Research Use only

Handling

Format:	Liquid
Buffer:	In PBS (0.09 % sodium azide)
Preservative:	Sodium azide
Precaution of Use:	This product contains Sodium azide: a POISONOUS AND HAZARDOUS SUBSTANCE which should be handled by trained staff only.
Storage:	4 °C
Storage Comment:	Store in the dark at 4°C. Do not freeze. Avoid prolonged exposure to light. Aliquot to avoid repeated freezing and thawing.

Images

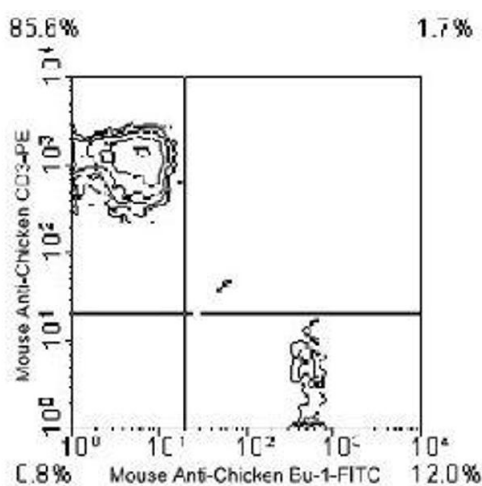


Image 1. Chicken peripheral blood mononuclear cells were double stained with mouse anti-chicken CD3-R-PE and Bu-1 monoclonal antibody, clone AV20 (FITC) . Lymphocytes were then gated and the cells analyzed on a FACScan™ flow cytometer (BDIS, San Jose, CA).