

Datasheet for ABIN5649247  
**anti-BU-1A / B6.1 antibody (PE)**[Go to Product page](#)

## 1 Image

## Overview

Quantity:	100 µg
Target:	BU-1A / B6.1
Reactivity:	Chicken
Host:	Mouse
Clonality:	Monoclonal
Conjugate:	This BU-1A / B6.1 antibody is conjugated to PE
Application:	Flow Cytometry (FACS), Immunoprecipitation (IP), Immunohistochemistry (Frozen Sections) (IHC (fro))

## Product Details

Purpose:	Mouse monoclonal antibody raised against native Bu-1a.
Immunogen:	Native purified from Bursal cells of one-day-old H.B15 (Bu-1 a/b) strain chickens.
Clone:	21-1A4
Isotype:	IgG1
Specificity:	Chicken Bu-1a alloantigen, Mr 70 KDa.
Cross-Reactivity:	Chicken
Cross-Reactivity (Details):	Chicken Bu-1a alloantigen, Mr 70 KDa.

## Target Details

Target:	BU-1A / B6.1
---------	--------------

## Target Details

Alternative Name: Bu-1a (BU-1A / B6.1 Products)

## Application Details

Application Notes: Flow Cytometry (0.2 µg/10<sup>6</sup> cells)  
The optimal working dilution should be determined by the end user.

Restrictions: For Research Use only

## Handling

Format: Liquid

Buffer: In PBS (0.09 % sodium azide)

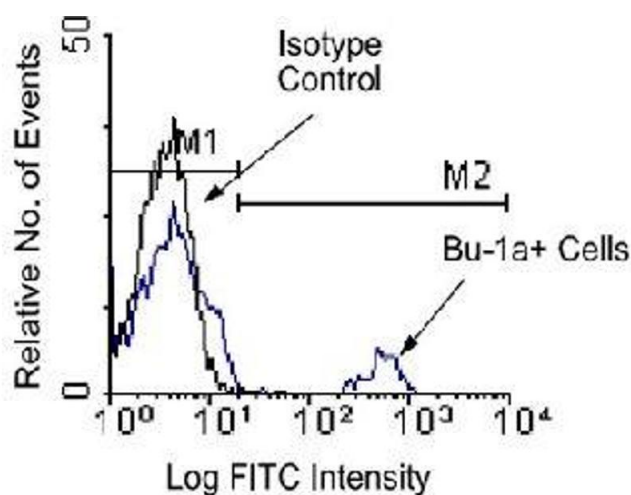
Preservative: Sodium azide

Precaution of Use: This product contains Sodium azide: a POISONOUS AND HAZARDOUS SUBSTANCE which should be handled by trained staff only.

Storage: 4 °C

Storage Comment: Store in the dark at 4°C. Do not freeze.  
Avoid prolonged exposure to light.  
Aliquot to avoid repeated freezing and thawing.

## Images



**Image 1.** Chicken peripheral blood mononuclear cells were first incubated with Bu-1a monoclonal antibody, clone 21-1A4 and then counter-stained with goat anti-mouse IgG-FITC. Small lymphocytes were gated using light scatter criteria and analyzed on a FACScan™ flow cytometer (BDB, San Jose, CA).