

Datasheet for ABIN5649258

anti-Retinol-Binding Protein antibody[Go to Product page](#)**1** Image

Overview

Quantity:	100 µg
Target:	Retinol-Binding Protein (RBP)
Reactivity:	Human
Host:	Mouse
Clonality:	Monoclonal
Conjugate:	This Retinol-Binding Protein antibody is un-conjugated
Application:	Immunofluorescence (IF), Immunohistochemistry (Paraffin-embedded Sections) (IHC (p))

Product Details

Purpose:	Mouse monoclonal antibody raised against native human Retinol Binding Protein.
Immunogen:	Native purified Retinol binding protein from human plasma.
Clone:	SPM442
Isotype:	IgG1
Cross-Reactivity:	Human

Target Details

Target:	Retinol-Binding Protein (RBP)
Alternative Name:	Retinol Binding Protein (RBP Products)

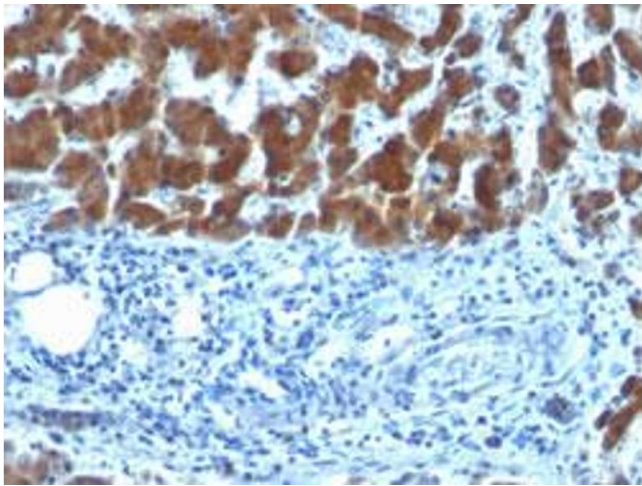
Application Details

Application Notes:	Immunofluorescence (1-2 µg/mL) Immunohistochemistry (Formalin/PFA-fixed paraffin-embedded sections) (0.5-1 µg/mL) The optimal working dilution should be determined by the end user.
Restrictions:	For Research Use only

Handling

Format:	Liquid
Buffer:	In 10 mM PBS (0.05 % BSA, 0.05 % sodium azide).
Preservative:	Sodium azide
Precaution of Use:	This product contains Sodium azide: a POISONOUS AND HAZARDOUS SUBSTANCE which should be handled by trained staff only.
Storage:	4 °C
Storage Comment:	Store at 4°C.

Images



Immunohistochemistry

Image 1. Immunohistochemical staining (Formalin-fixed paraffin-embedded sections) of human hepatocellular carcinoma with Retinol Binding Protein monoclonal antibody, clone SPM442 .