

Datasheet for ABIN5649334
anti-BACE1 antibody (AA 112-324)[Go to Product page](#)

6 Images

Overview

Quantity:	100 µg
Target:	BACE1
Binding Specificity:	AA 112-324
Reactivity:	Human
Host:	Mouse
Clonality:	Monoclonal
Conjugate:	This BACE1 antibody is un-conjugated
Application:	Western Blotting (WB), ELISA, Immunofluorescence (IF), Flow Cytometry (FACS)

Product Details

Purpose:	Mouse monoclonal antibody raised against partial recombinant human BACE1.
Immunogen:	Recombinant protein corresponding to amino acids 112-324 of human BACE1.
Clone:	3C1C3
Isotype:	IgG1
Cross-Reactivity:	Human, Mouse, Rat

Target Details

Target:	BACE1
Alternative Name:	BACE1 (BACE1 Products)
Background:	Full Gene Name: beta-site APP-cleaving enzyme 1

Target Details

	Synonyms: ASP2,BACE,FLJ90568,HSPC104,KIAA1149
Gene ID:	23621

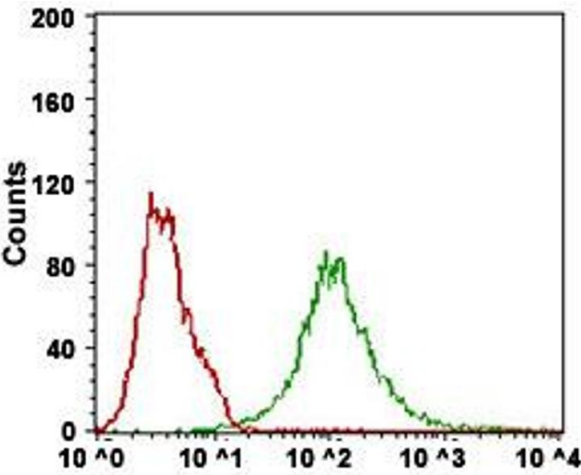
Application Details

Application Notes:	ELISA (1:10000) Flow Cytometry (1:200-1:400) Immunofluorescence (1:200-1:1000) Western Blot (1:500-1:2000) The optimal working dilution should be determined by the end user.
Restrictions:	For Research Use only

Handling

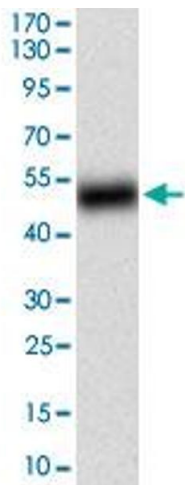
Format:	Liquid
Buffer:	In PBS (0.05 % sodium azide)
Preservative:	Sodium azide
Precaution of Use:	This product contains Sodium azide: a POISONOUS AND HAZARDOUS SUBSTANCE which should be handled by trained staff only.
Storage:	4 °C,-20 °C
Storage Comment:	Store at 4°C. For long term storage store at -20°C. Aliquot to avoid repeated freezing and thawing.

Images



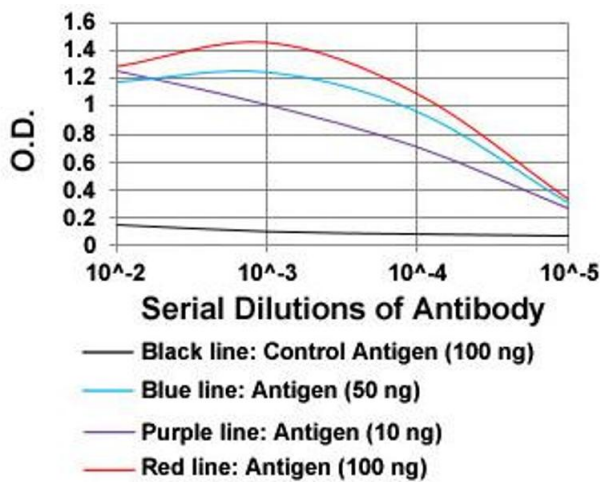
Flow Cytometry

Image 1. Flow Cytometry analysis of Hela cells with BACE1 monoclonal antibody, clone 3C1C3 at 1:200-1:400 dilution (Green) and negative control (Red).



Western Blotting

Image 2. Western blot analysis of human BACE1 (AA: 112-324) recombinant protein (Expected MW is 49.9 kDa) with BACE1 monoclonal antibody, clone 3C1C3 at 1:500-1:2000 dilution.



ELISA

Image 3. ELISA analysis of BACE1 monoclonal antibody, clone 3C1C3 at 1:10000 dilution.

Please check the [product details page](#) for more images. Overall 6 images are available for ABIN5649334.