

Datasheet for ABIN5649340
anti-STXBP3 antibody (AA 16-169)

5 Images

[Go to Product page](#)

Overview

Quantity:	100 µg
Target:	STXBP3
Binding Specificity:	AA 16-169
Reactivity:	Mouse
Host:	Mouse
Clonality:	Monoclonal
Conjugate:	This STXBP3 antibody is un-conjugated
Application:	Western Blotting (WB), ELISA, Immunohistochemistry (Paraffin-embedded Sections) (IHC (p)), Flow Cytometry (FACS)

Product Details

Purpose:	Mouse monoclonal antibody raised against partial recombinant mouse Bpifa2.
Immunogen:	Recombinant protein corresponding to amino acids 16-169 of mouse Bpifa2.
Clone:	2B4F5
Isotype:	IgG1
Cross-Reactivity:	Human, Mouse

Target Details

Target:	STXBP3
Alternative Name:	Psp (STXBP3 Products)

Target Details

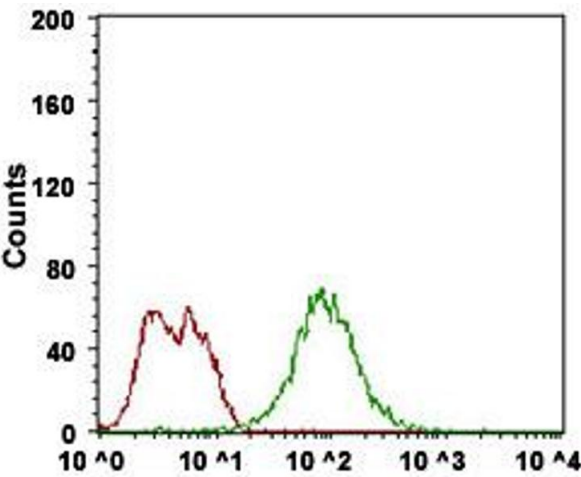
Background:	Full Gene Name: parotid secretory protein
Gene ID:	19194
Pathways:	Hormone Transport

Application Details

Application Notes:	ELISA (1:10000) Flow Cytometry (1:200-1:400) Immunohistochemistry (1:200-1:1000) Western Blot (1:500-1:2000) The optimal working dilution should be determined by the end user.
Restrictions:	For Research Use only

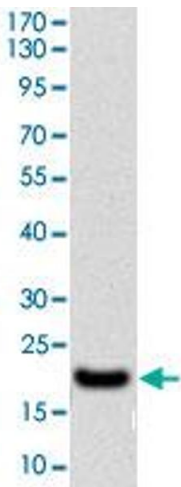
Handling

Format:	Liquid
Buffer:	In PBS (0.05 % sodium azide)
Preservative:	Sodium azide
Precaution of Use:	This product contains Sodium azide: a POISONOUS AND HAZARDOUS SUBSTANCE which should be handled by trained staff only.
Storage:	4 °C,-20 °C
Storage Comment:	Store at 4°C. For long term storage store at -20°C. Aliquot to avoid repeated freezing and thawing.



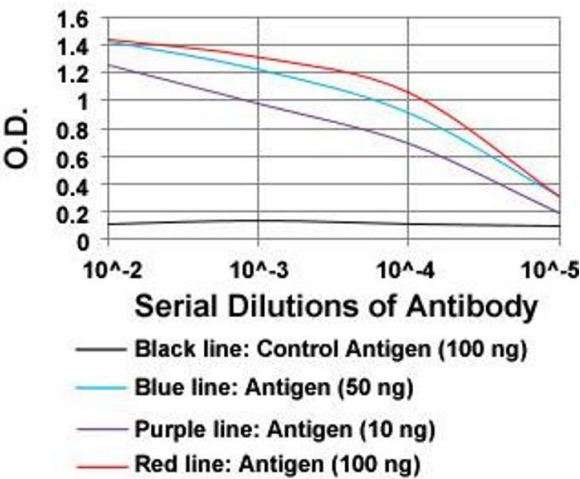
Flow Cytometry

Image 1. Flow Cytometry analysis of MCF-7 cells with Bpifa2 monoclonal antibody, clone 2B4F5 at 1:200-1:400 dilution (Green) and negative control (Red).



Western Blotting

Image 2. Western blot analysis of Bpifa2 (AA: 16-169) recombinant protein (Expected MW is 18.5 kDa) with Bpifa2 monoclonal antibody, clone 2B4F5 at 1:500-1:2000 dilution.



ELISA

Image 3. ELISA analysis of Bpifa2 monoclonal antibody, clone 2B4F5 at 1:10000 dilution.

Please check the [product details page](#) for more images. Overall 5 images are available for ABIN5649340.