



[Go to Product page](#)

Datasheet for ABIN5649366

anti-Laminin beta 1 antibody (AA 652-790)

2 Images

Overview

Quantity:	100 µL
Target:	Laminin beta 1 (LAMB1)
Binding Specificity:	AA 652-790
Reactivity:	Human
Host:	Rabbit
Clonality:	Polyclonal
Conjugate:	This Laminin beta 1 antibody is un-conjugated
Application:	Western Blotting (WB), Immunohistochemistry (Paraffin-embedded Sections) (IHC (p))

Product Details

Purpose:	Rabbit polyclonal antibody raised against partial recombinant human LAMB1.
Immunogen:	Recombinant protein corresponding to amino acids 652-790 of human LAMB1.
Sequence:	NQVVSLSPGS RYVVLPRPVC FEKGTNYTVR LELPQYTSSD SDVESPYTLI DSLVLMPLYCK SLDIFTVGGG GDGVVTNSAW ETFQRYRCLE NSRSVVKTPM TDVCRNIIFS ISALLHQTGL ACECDPQGSL SSVCDPNGG
Isotype:	IgG
Cross-Reactivity:	Human

Target Details

Target:	Laminin beta 1 (LAMB1)
---------	------------------------

Target Details

Alternative Name:	LAMB1 (LAMB1 Products)
Background:	Full Gene Name: laminin, beta 1 Synonyms: CLM,MGC142015
Gene ID:	3912

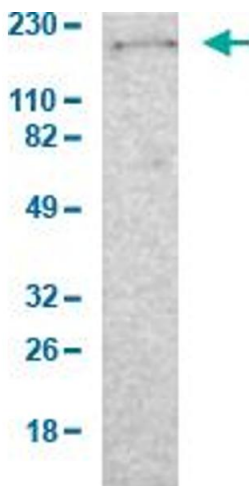
Application Details

Application Notes:	Immunohistochemistry (Formalin/PFA-fixed paraffin-embedded sections) (1:20-1:50) Western Blot (1:100-1:250) The optimal working dilution should be determined by the end user.
Restrictions:	For Research Use only

Handling

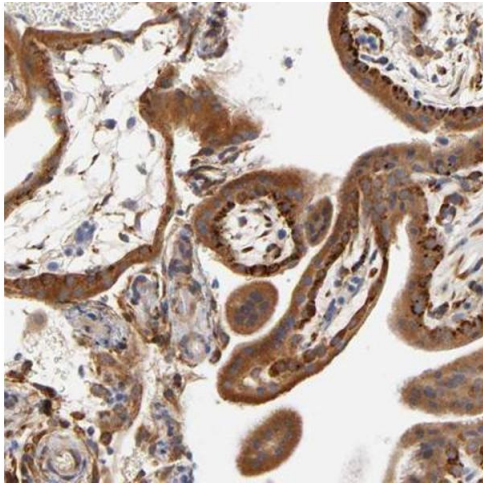
Format:	Liquid
Buffer:	In PBS, pH 7.2 (40 % glycerol, 0.02 % sodium azide).
Preservative:	Sodium azide
Precaution of Use:	This product contains Sodium azide: a POISONOUS AND HAZARDOUS SUBSTANCE which should be handled by trained staff only.
Storage:	4 °C,-20 °C
Storage Comment:	Store at 4°C for short term storage. For long term storage store at -20°C. Aliquot to avoid repeated freezing and thawing.

Images



Western Blotting

Image 1. Western Blot analysis of human cell line RT-4.



Immunohistochemistry

Image 2. Immunohistochemical staining (Formalin-fixed paraffin-embedded sections) of human placenta shows strong cytoplasmic positivity in trophoblastic cells.