



Datasheet for ABIN5649385  
**anti-PRRC2B antibody**



[Go to Product page](#)

1 Image

Overview

Quantity:	100 µL
Target:	PRRC2B
Reactivity:	Human
Host:	Rabbit
Clonality:	Polyclonal
Conjugate:	This PRRC2B antibody is un-conjugated
Application:	Immunohistochemistry (Paraffin-embedded Sections) (IHC (p))

Product Details

Purpose:	Rabbit polyclonal antibody raised against recombinant BAT2L.
Immunogen:	Recombinant protein corresponding to amino acids of human BAT2L.
Sequence:	EREESTLKKG DCRDSWRSNK GCSEDHSGLD AKSRGPRAFG RALPPRLSNC GYGRRTFVSK ESPHWQSKSP GSSWQEYGPS DTCGSRRTD RDYVPDSYRH PDAFGGR
Isotype:	IgG
Cross-Reactivity:	Human

Target Details

Target:	PRRC2B
Alternative Name:	BAT2L ( <a href="#">PRRC2B Products</a> )
Background:	Full Gene Name: HLA-B associated transcript 2-like

## Target Details

Synonyms: DKFZp781F05101,DKFZp781K12107,KIAA0515,LQFBS-1,MGC10526

Gene ID: 84726

Pathways: [SARS-CoV-2 Protein Interactome](#)

## Application Details

Application Notes: Immunohistochemistry (1:50-1:200)  
The optimal working dilution should be determined by the end user.

Restrictions: For Research Use only

## Handling

Format: Liquid

Buffer: In PBS, pH 7.2 (40 % glycerol, 0.02 % sodium azide)

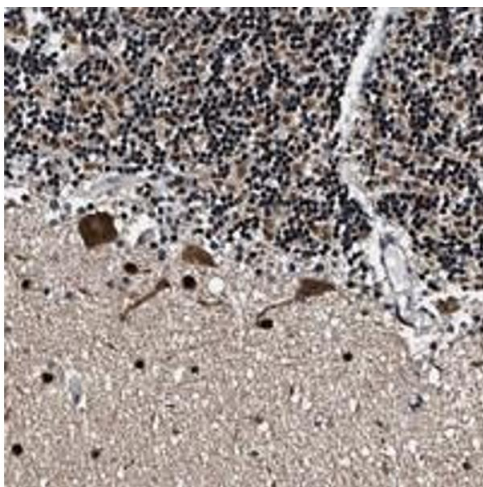
Preservative: Sodium azide

Precaution of Use: This product contains Sodium azide: a POISONOUS AND HAZARDOUS SUBSTANCE which should be handled by trained staff only.

Storage: 4 °C,-20 °C

Storage Comment: Store at 4°C. For long term storage store at -20°C.  
Aliquot to avoid repeated freezing and thawing.

## Images



### Immunohistochemistry

**Image 1.** Immunohistochemical staining of human cerebellum with BAT2L polyclonal antibody shows strong positivity in most cells at 1:50-1:200 dilution.