



Datasheet for ABIN5649401  
**anti-BEND3 antibody**



[Go to Product page](#)

1 Image

Overview

|              |   |
|--------------|---|
| Quantity:    | 100 µL  |
| Target:      | BEND3   |
| Reactivity:  | Human   |
| Host:        | Rabbit  |
| Clonality:   | Polyclonal  |
| Conjugate:   | This BEND3 antibody is un-conjugated                        |
| Application: | Immunohistochemistry (Paraffin-embedded Sections) (IHC (p)) |

Product Details

|                   |   |
|-------------------|---|
| Purpose:          | Rabbit polyclonal antibody raised against recombinant BEND3.  |
| Immunogen:        | Recombinant protein corresponding to amino acids of human BEND3.  |
| Sequence:         | CLPQLNDFFS RFWAQREMED SQPSGQVASF FEAEQVDPGH FLDNKDQEEA LSLDRSSTIA<br>SDHVVDTQDL TEFLDEASSP GEFAVLLHR LPPELFDHRK LGEQYSCYGD GKGQELDPQR<br>LQIRNYTEI YFPD |
| Isotype:          | IgG   |
| Cross-Reactivity: | Human   |

Target Details

|                   |  |
|-------------------|--|
| Target:           | BEND3                                    |
| Alternative Name: | BEND3 ( <a href="#">BEND3 Products</a> ) |

## Target Details

Background: Full Gene Name: BEN domain containing 3  
Synonyms: KIAA1553,RP11-59I9.2

Gene ID: 57673

## Application Details

Application Notes: Immunohistochemistry (1:500-1:1000)  
The optimal working dilution should be determined by the end user.

Restrictions: For Research Use only

## Handling

Format: Liquid

Buffer: In PBS, pH 7.2 (40 % glycerol, 0.02 % sodium azide)

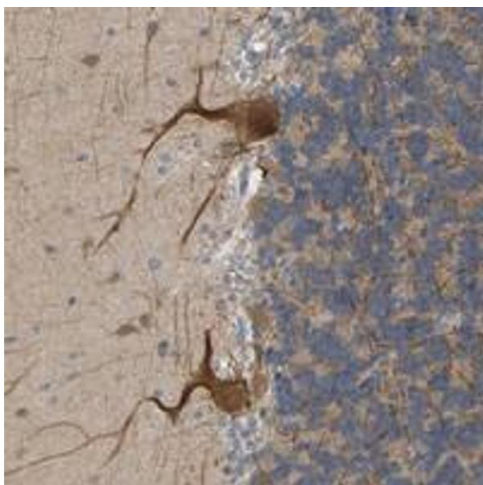
Preservative: Sodium azide

Precaution of Use: This product contains Sodium azide: a POISONOUS AND HAZARDOUS SUBSTANCE which should be handled by trained staff only.

Storage: 4 °C,-20 °C

Storage Comment: Store at 4°C. For long term storage store at -20°C.  
Aliquot to avoid repeated freezing and thawing.

## Images



### Immunohistochemistry

**Image 1.** Immunohistochemical staining of human cerebellum with BEND3 polyclonal antibody shows moderate cytoplasmic positivity in cerebellar tissue.