

Datasheet for ABIN5649406

anti-BEX4 antibody**1** Image[Go to Product page](#)

Overview

Quantity:	100 µL
Target:	BEX4
Reactivity:	Human
Host:	Rabbit
Clonality:	Polyclonal
Conjugate:	This BEX4 antibody is un-conjugated
Application:	Immunohistochemistry (Paraffin-embedded Sections) (IHC (p))

Product Details

Purpose:	Rabbit polyclonal antibody raised against recombinant BEX4.
Immunogen:	Recombinant protein corresponding to amino acids of human BEX4.
Sequence:	WAIPNRHIEH NEARDDVERF VGQMMEIKRK TREQQMRHYM RFQTPEPDNH YDF
Isotype:	IgG
Cross-Reactivity:	Human

Target Details

Target:	BEX4
Alternative Name:	BEX4 (BEX4 Products)
Background:	Full Gene Name: brain expressed, X-linked 4 Synonyms: BEXL1, FLJ10097

Target Details

Gene ID: 56271

Application Details

Application Notes: Immunohistochemistry (1:500-1:1000)
The optimal working dilution should be determined by the end user.

Restrictions: For Research Use only

Handling

Format: Liquid

Buffer: In PBS, pH 7.2 (40 % glycerol, 0.02 % sodium azide)

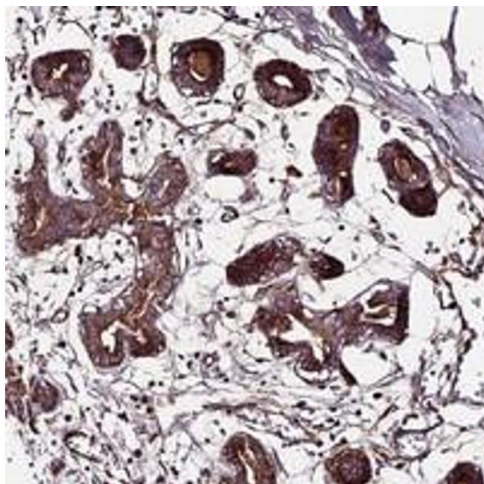
Preservative: Sodium azide

Precaution of Use: This product contains Sodium azide: a POISONOUS AND HAZARDOUS SUBSTANCE which should be handled by trained staff only.

Storage: 4 °C, -20 °C

Storage Comment: Store at 4°C. For long term storage store at -20°C.
Aliquot to avoid repeated freezing and thawing.

Images



Immunohistochemistry

Image 1. Immunohistochemical staining of human breast with BEX4 polyclonal antibody shows strong cytoplasmic and membranous positivity in glandular cells along with distinct extracellular positivity at 1:500-1:1000 dilution.