



Datasheet for ABIN5649410
anti-BICC1 antibody



[Go to Product page](#)

2 Images

Overview

Quantity:	100 µL
Target:	BICC1
Reactivity:	Human
Host:	Rabbit
Clonality:	Polyclonal
Conjugate:	This BICC1 antibody is un-conjugated
Application:	Western Blotting (WB), Immunohistochemistry (Paraffin-embedded Sections) (IHC (p))

Product Details

Purpose:	Rabbit polyclonal antibody raised against recombinant BICC1.
Immunogen:	Recombinant protein corresponding to amino acids of human BICC1.
Sequence:	NAGDLKQMMC PSKVSCAKRQ TVELLQGTKN SHLHSTDRLL SDPELSATES PLADKKAPGS ERAAERAAAA QQNSERAHLA PRSSVNMQA FDYEQKLLA TKAMLKKPVV TEVRTPTNTW SGLGFSKSMP AETIKELRRA
Isotype:	IgG
Cross-Reactivity:	Human

Target Details

Target:	BICC1
Alternative Name:	BICC1 (BICC1 Products)

Target Details

Background: Full Gene Name: bicaudal C homolog 1 (Drosophila)

Gene ID: 80114

Application Details

Application Notes: Immunohistochemistry (1:50-1:200)
Western Blot (1:250-1:500)
The optimal working dilution should be determined by the end user.

Restrictions: For Research Use only

Handling

Format: Liquid

Buffer: In PBS, pH 7.2 (40 % glycerol, 0.02 % sodium azide)

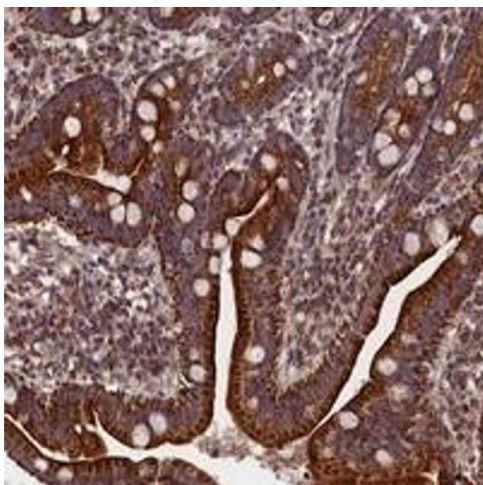
Preservative: Sodium azide

Precaution of Use: This product contains Sodium azide: a POISONOUS AND HAZARDOUS SUBSTANCE which should be handled by trained staff only.

Storage: 4 °C,-20 °C

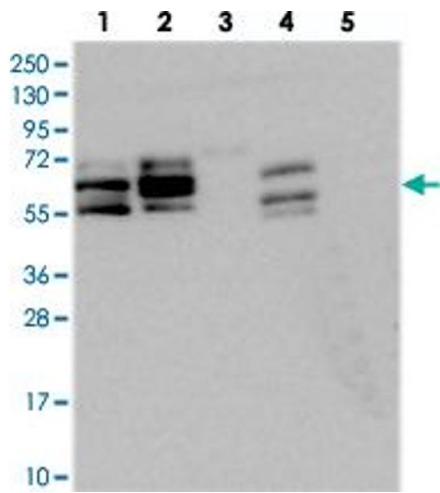
Storage Comment: Store at 4°C. For long term storage store at -20°C.
Aliquot to avoid repeated freezing and thawing.

Images



Immunohistochemistry

Image 1. Immunohistochemical staining of human duodenum with BICC1 polyclonal antibody shows strong granular cytoplasmic positivity in glandular cells at 1:50-1:200 dilution.



Western Blotting

Image 2. Western blot analysis of Lane 1: RT-4, Lane 2: U-251 MG, Lane 3: Human Plasma, Lane 4: Liver, Lane 5: Tonsil with BICC1 polyclonal antibody at 1:250-1:500 dilution.