



[Go to Product page](#)

Datasheet for ABIN5649449

anti-OPAL1 antibody

2 Images

Overview

Quantity:	100 µL
Target:	OPAL1 (WBP1L)
Reactivity:	Human
Host:	Rabbit
Clonality:	Polyclonal
Conjugate:	This OPAL1 antibody is un-conjugated
Application:	Western Blotting (WB), Immunohistochemistry (Paraffin-embedded Sections) (IHC (p))

Product Details

Purpose:	Rabbit polyclonal antibody raised against recombinant C10orf26.
Immunogen:	Recombinant protein corresponding to amino acids of human C10orf26.
Sequence:	PLSEPSRSST RPPSIADPDP SDLPVDRRAAT KAPGMEPSGS VAGLGELDPG AFLDKDAECCR EELLKDDSSSE HGAPDSKEKT PGRHRRFTGD
Isotype:	IgG
Cross-Reactivity:	Human

Target Details

Target:	OPAL1 (WBP1L)
Alternative Name:	C10orf26 (WBP1L Products)
Background:	Full Gene Name: chromosome 10 open reading frame 26

Target Details

Synonyms: FLJ20154,FLJ20367,MGC125648,OPAL1

Gene ID: 54838

Application Details

Application Notes: Immunohistochemistry (1:50-1:200)
Western Blot (1:250-1:500)
The optimal working dilution should be determined by the end user.

Restrictions: For Research Use only

Handling

Format: Liquid

Buffer: In PBS, pH 7.2 (40 % glycerol, 0.02 % sodium azide)

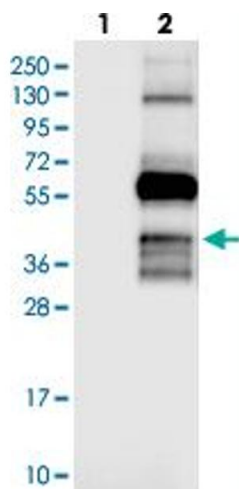
Preservative: Sodium azide

Precaution of Use: This product contains Sodium azide: a POISONOUS AND HAZARDOUS SUBSTANCE which should be handled by trained staff only.

Storage: 4 °C,-20 °C

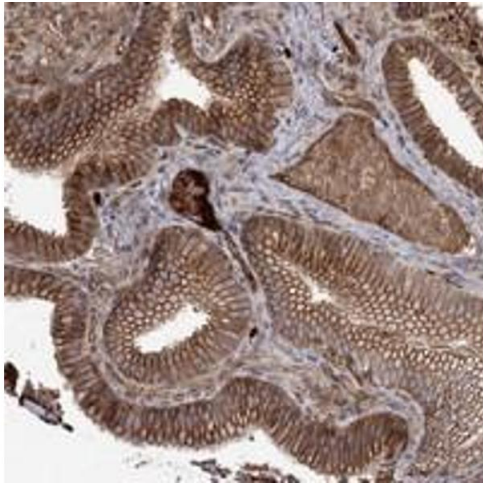
Storage Comment: Store at 4°C. For long term storage store at -20°C.
Aliquot to avoid repeated freezing and thawing.

Images



Western Blotting

Image 1. Western blot analysis of Lane 1: Negative control (vector only transfected HEK293T lysate), Lane 2: Over-expression Lysate (Co-expressed with a C-terminal myc-DDK tag (~3.1 kDa) in mammalian HEK293T cells) with C10orf26 polyclonal antibody .



Immunohistochemistry

Image 2. Immunohistochemical staining of human gallbladder with C10orf26 polyclonal antibody shows strong cytoplasmic and membranous positivity in glandular cells.