



[Go to Product page](#)

Datasheet for ABIN5649452
anti-C10ORF35 antibody

1 Image

Overview

Quantity:	100 µL
Target:	C10ORF35
Reactivity:	Human
Host:	Rabbit
Clonality:	Polyclonal
Conjugate:	This C10ORF35 antibody is un-conjugated
Application:	Immunohistochemistry (Paraffin-embedded Sections) (IHC (p))

Product Details

Purpose:	Rabbit polyclonal antibody raised against recombinant C10orf35.
Immunogen:	Recombinant protein corresponding to amino acids of human C10orf35.
Sequence:	MSPVLSGIHS IYSAWVTSVN ITDCKPPSIS GAAHQGPTAP GRMVRILANG EIVQDDDP RV RTTTQ
Isotype:	IgG
Cross-Reactivity:	Human

Target Details

Target:	C10ORF35
Alternative Name:	C10orf35 (C10ORF35 Products)
Background:	Full Gene Name: chromosome 10 open reading frame 35
Gene ID:	219738

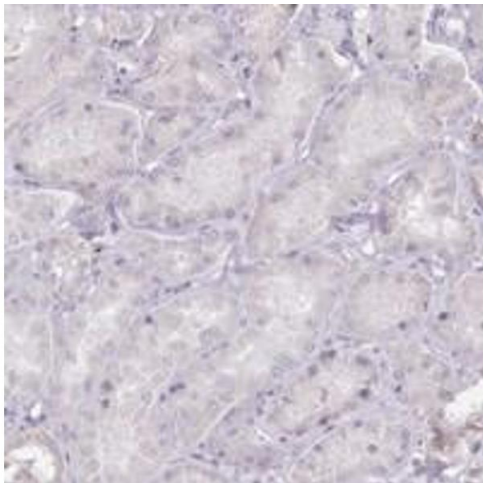
Application Details

Application Notes:	Immunohistochemistry (1:500-1:1000) The optimal working dilution should be determined by the end user.
Restrictions:	For Research Use only

Handling

Format:	Liquid
Buffer:	In PBS, pH 7.2 (40 % glycerol, 0.02 % sodium azide)
Preservative:	Sodium azide
Precaution of Use:	This product contains Sodium azide: a POISONOUS AND HAZARDOUS SUBSTANCE which should be handled by trained staff only.
Storage:	4 °C,-20 °C
Storage Comment:	Store at 4°C. For long term storage store at -20°C. Aliquot to avoid repeated freezing and thawing.

Images



Immunohistochemistry

Image 1. Immunohistochemical staining of human kidney with C10orf35 polyclonal antibody shows distinct membranous positivity in subsets of glomerular cells at 1:500-1:1000 dilution.