



Datasheet for ABIN5649456
anti-C10orf67 antibody



[Go to Product page](#)

1 Image

Overview

Quantity:	100 µL
Target:	C10orf67
Reactivity:	Human
Host:	Rabbit
Clonality:	Polyclonal
Conjugate:	This C10orf67 antibody is un-conjugated
Application:	Immunohistochemistry (Paraffin-embedded Sections) (IHC (p))

Product Details

Purpose:	Rabbit polyclonal antibody raised against recombinant C10orf67.
Immunogen:	Recombinant protein corresponding to amino acids of human C10orf67.
Sequence:	QLKFEDRLKE ESLSLFTILH DRILEIEKHY QQNEDKMRKS FNQQLADAIA VIKGMYQQFF EVEEENVSLQ DASTVKTN
Isotype:	IgG
Cross-Reactivity:	Human

Target Details

Target:	C10orf67
Alternative Name:	C10orf67 (C10orf67 Products)
Background:	Full Gene Name: chromosome 10 open reading frame 67

Target Details

Synonyms: MGC46732,RP11-792P23.2

Gene ID: 256815

Application Details

Application Notes: Immunohistochemistry (1:500-1:1000)
The optimal working dilution should be determined by the end user.

Restrictions: For Research Use only

Handling

Format: Liquid

Buffer: In PBS, pH 7.2 (40 % glycerol, 0.02 % sodium azide)

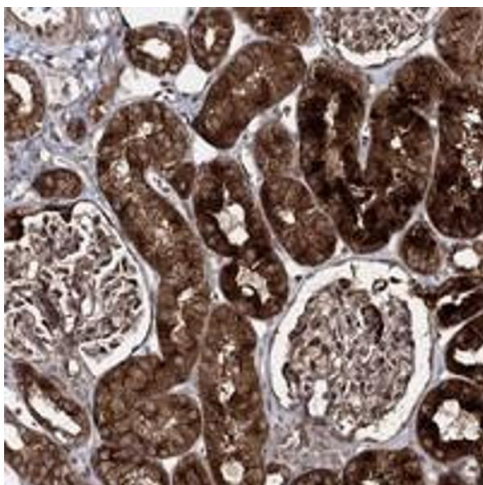
Preservative: Sodium azide

Precaution of Use: This product contains Sodium azide: a POISONOUS AND HAZARDOUS SUBSTANCE which should be handled by trained staff only.

Storage: 4 °C,-20 °C

Storage Comment: Store at 4°C. For long term storage store at -20°C.
Aliquot to avoid repeated freezing and thawing.

Images



Immunohistochemistry

Image 1. Immunohistochemical staining of human kidney with C10orf67 polyclonal antibody shows strong cytoplasmic and membranous positivity in cells of tubules.