

Datasheet for ABIN5649465  
**anti-C11orf48 antibody**



[Go to Product page](#)

1 Image

Overview

Quantity:	100 µL
Target:	C11orf48 (C11ORF48)
Reactivity:	Human
Host:	Rabbit
Clonality:	Polyclonal
Conjugate:	This C11orf48 antibody is un-conjugated
Application:	Immunohistochemistry (Paraffin-embedded Sections) (IHC (p))

Product Details

Purpose:	Rabbit polyclonal antibody raised against recombinant C11orf48.
Immunogen:	Recombinant protein corresponding to amino acids of human C11orf48.
Sequence:	LVPGRSKEDG LWTRNSPGSS QHPESPRLPN PLWDRGKIGK VEGHQHIQDF SQKSHLPSIV VESSEVNEES GDLHLPHEEL LLLTDGEEED AEAFFQDQSE
Isotype:	IgG
Cross-Reactivity:	Human

Target Details

Target:	C11orf48 (C11ORF48)
Alternative Name:	C11orf48 ( <a href="#">C11ORF48 Products</a> )
Background:	Full Gene Name: chromosome 11 open reading frame 48

## Target Details

Synonyms: MGC2477

Gene ID: 79081

## Application Details

Application Notes: Immunohistochemistry (1:50-1:200)  
The optimal working dilution should be determined by the end user.

Restrictions: For Research Use only

## Handling

Format: Liquid

Buffer: In PBS, pH 7.2 (40 % glycerol, 0.02 % sodium azide)

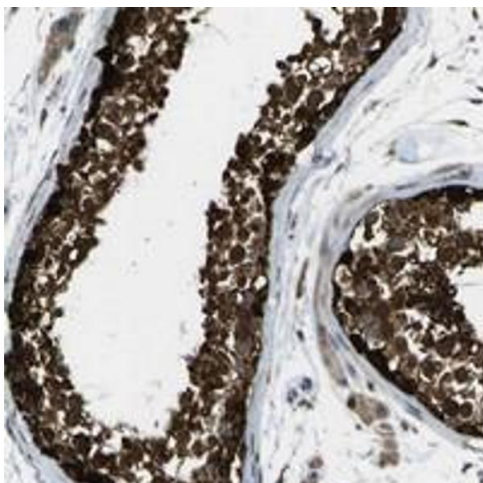
Preservative: Sodium azide

Precaution of Use: This product contains Sodium azide: a POISONOUS AND HAZARDOUS SUBSTANCE which should be handled by trained staff only.

Storage: 4 °C, -20 °C

Storage Comment: Store at 4°C. For long term storage store at -20°C.  
Aliquot to avoid repeated freezing and thawing.

## Images



### Immunohistochemistry

**Image 1.** Immunohistochemical staining of human testis with C11orf48 polyclonal antibody shows strong nuclear and cytoplasmic positivity in cells of seminiferous ducts at 1:50-1:200 dilution.