



[Go to Product page](#)

Datasheet for ABIN5649488
anti-METTL25 antibody

2 Images

Overview

Quantity:	100 µL
Target:	METTL25
Reactivity:	Human
Host:	Rabbit
Clonality:	Polyclonal
Conjugate:	This METTL25 antibody is un-conjugated
Application:	Western Blotting (WB), Immunohistochemistry (Paraffin-embedded Sections) (IHC (p))

Product Details

Purpose:	Rabbit polyclonal antibody raised against recombinant C12orf26.
Immunogen:	Recombinant protein corresponding to amino acids of human C12orf26.
Sequence:	TSEANKERRK MTSKSSSENI YSPLTSFITA DSELHDIKD LEDCLMVGLH TCGDLAPNTL RIFTSNSEIK GVCSVGRCYH LLSEEFENQH KERTQEKW
Isotype:	IgG
Cross-Reactivity:	Human

Target Details

Target:	METTL25
Alternative Name:	C12orf26 (METTL25 Products)
Background:	Full Gene Name: chromosome 12 open reading frame 26

Target Details

Synonyms: FLJ22789

Gene ID: 84190

Application Details

Application Notes: Immunohistochemistry (1:500-1:1000)
Western Blot (1:250-1:500)
The optimal working dilution should be determined by the end user.

Restrictions: For Research Use only

Handling

Format: Liquid

Buffer: In PBS, pH 7.2 (40 % glycerol, 0.02 % sodium azide)

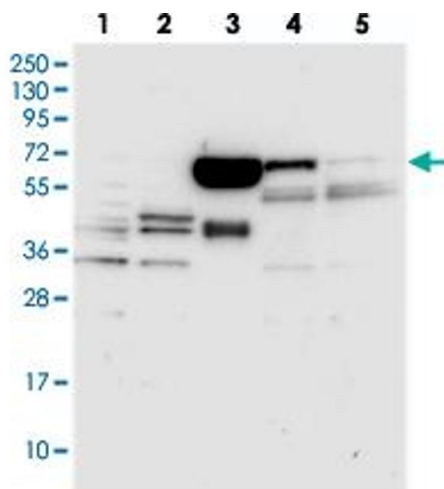
Preservative: Sodium azide

Precaution of Use: This product contains Sodium azide: a POISONOUS AND HAZARDOUS SUBSTANCE which should be handled by trained staff only.

Storage: 4 °C,-20 °C

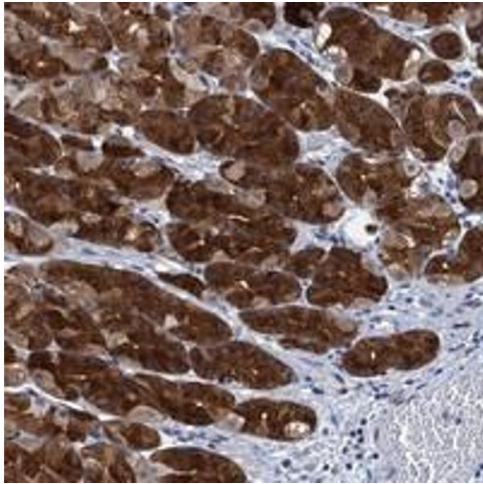
Storage Comment: Store at 4°C. For long term storage store at -20°C.
Aliquot to avoid repeated freezing and thawing.

Images



Western Blotting

Image 1. Western blot analysis of Lane 1: RT-4, Lane 2: U-251 MG, Lane 3: Human Plasma, Lane 4: Liver, Lane 5: Tonsil with C12orf26 polyclonal antibody .



Immunohistochemistry

Image 2. Immunohistochemical staining of human stomach with C12orf26 polyclonal antibody shows strong cytoplasmic positivity in glandular cells.