



Datasheet for ABIN5649492  
**anti-KIAA1551 antibody**



[Go to Product page](#)

1 Image

Overview

Quantity:	100 µL
Target:	KIAA1551
Reactivity:	Human
Host:	Rabbit
Clonality:	Polyclonal
Conjugate:	This KIAA1551 antibody is un-conjugated
Application:	Immunohistochemistry (Paraffin-embedded Sections) (IHC (p))

Product Details

Purpose:	Rabbit polyclonal antibody raised against recombinant C12orf35.
Immunogen:	Recombinant protein corresponding to amino acids of human C12orf35.
Sequence:	KEALSNKASK KICVKNVPCD SEHMRPSKLA VQVESCCKSN EKHSSGVQTS KESLNGLTSH GKNLKIHHSSQ ESKTYNILRN VKEKVGKQP DKIWIDKTKL DKLTNISNEA QFSQMPPQVK DQKKLYLNRV GFKCTERE
Isotype:	IgG
Cross-Reactivity:	Human

Target Details

Target:	KIAA1551
Alternative Name:	C12orf35 ( <a href="#">KIAA1551 Products</a> )

## Target Details

Background: Full Gene Name: chromosome 12 open reading frame 35  
Synonyms: FLJ10652,FLJ20696

Gene ID: 55196

## Application Details

Application Notes: Immunohistochemistry (1:50-1:200)  
The optimal working dilution should be determined by the end user.

Restrictions: For Research Use only

## Handling

Format: Liquid

Buffer: In PBS, pH 7.2 (40 % glycerol, 0.02 % sodium azide)

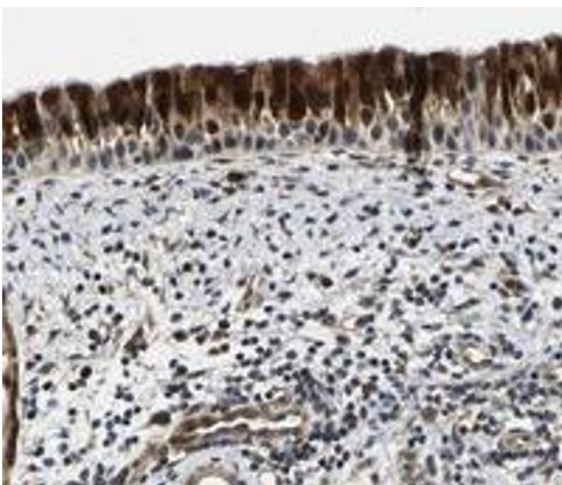
Preservative: Sodium azide

Precaution of Use: This product contains Sodium azide: a POISONOUS AND HAZARDOUS SUBSTANCE which should be handled by trained staff only.

Storage: 4 °C,-20 °C

Storage Comment: Store at 4°C. For long term storage store at -20°C.  
Aliquot to avoid repeated freezing and thawing.

## Images



### Immunohistochemistry

**Image 1.** Immunohistochemical staining of human nasopharynx with C12orf35 polyclonal antibody shows strong nuclear and cytoplasmic positivity in respiratory epithelial cells.