

Datasheet for ABIN5649501

anti-SMC02 antibody[Go to Product page](#)**1** Image

Overview

Quantity:	100 µL
Target:	SMC02
Reactivity:	Human
Host:	Rabbit
Clonality:	Polyclonal
Conjugate:	This SMC02 antibody is un-conjugated
Application:	Immunohistochemistry (Paraffin-embedded Sections) (IHC (p))

Product Details

Purpose:	Rabbit polyclonal antibody raised against recombinant C12orf70.
Immunogen:	Recombinant protein corresponding to amino acids of human C12orf70.
Sequence:	LKKKVIERLE DLCKNVELLS AKLRMYQMEA EDTDSHSSEE IDTEEMEALL PQAPASFLVQ KSPPRNTAWK R
Isotype:	IgG
Cross-Reactivity:	Human

Target Details

Target:	SMC02
Alternative Name:	C12orf70 (SMC02 Products)
Background:	Full Gene Name: chromosome 12 open reading frame 70

Target Details

Gene ID: 341346

Application Details

Application Notes: Immunohistochemistry (1:50-1:200)
The optimal working dilution should be determined by the end user.

Restrictions: For Research Use only

Handling

Format: Liquid

Buffer: In PBS, pH 7.2 (40 % glycerol, 0.02 % sodium azide)

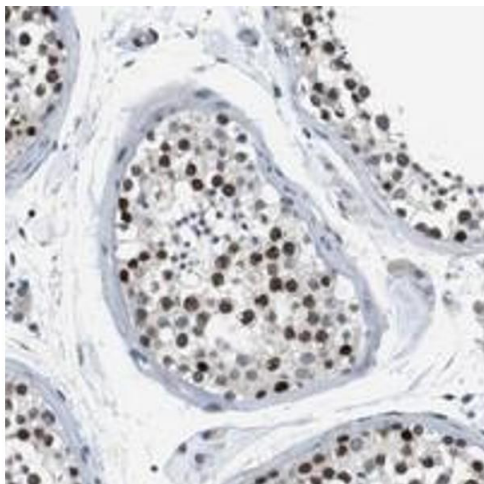
Preservative: Sodium azide

Precaution of Use: This product contains Sodium azide: a POISONOUS AND HAZARDOUS SUBSTANCE which should be handled by trained staff only.

Storage: 4 °C, -20 °C

Storage Comment: Store at 4°C. For long term storage store at -20°C.
Aliquot to avoid repeated freezing and thawing.

Images



Immunohistochemistry

Image 1. Immunohistochemical staining of human testis with C12orf70 polyclonal antibody shows strong nuclear positivity in cells in seminiferous ducts at 1:50-1:200 dilution.