



[Go to Product page](#)

Datasheet for ABIN5649518
anti-ELMSAN1 antibody

2 Images

Overview

Quantity:	100 µL
Target:	ELMSAN1
Reactivity:	Human
Host:	Rabbit
Clonality:	Polyclonal
Application:	Immunofluorescence (IF), Immunohistochemistry (Paraffin-embedded Sections) (IHC (p))

Product Details

Purpose:	Rabbit polyclonal antibody raised against recombinant C14orf43.
Immunogen:	Recombinant protein corresponding to amino acids of human C14orf43.
Sequence:	AQEEVEVDIK ASDILILRSH ESNAPGSAGG QASEKPREGT GKSRRALPFS EKKKKTTETFS KTQNQENTFP CK
Isotype:	IgG
Cross-Reactivity:	Human

Target Details

Target:	ELMSAN1
Alternative Name:	C14orf43 (ELMSAN1 Products)
Background:	Full Gene Name: chromosome 14 open reading frame 43 Synonyms: C14orf117,FLJ00335,LSR68,c14_5541

Target Details

Gene ID: 91748

Application Details

Application Notes: Immunohistochemistry (1:20-1:50)
Immunofluorescence (1-4 µg/mL)
The optimal working dilution should be determined by the end user.

Restrictions: For Research Use only

Handling

Format: Liquid

Buffer: In PBS, pH 7.2 (40 % glycerol, 0.02 % sodium azide)

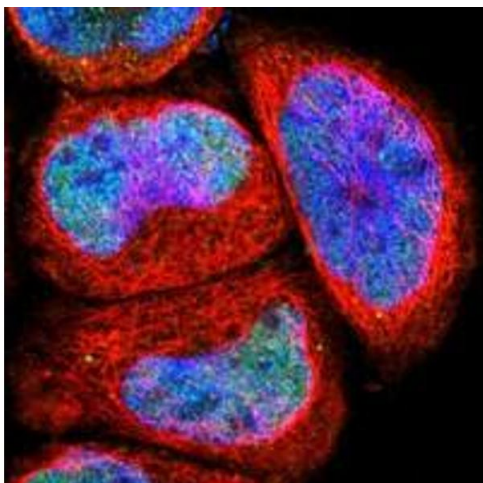
Preservative: Sodium azide

Precaution of Use: This product contains Sodium azide: a POISONOUS AND HAZARDOUS SUBSTANCE which should be handled by trained staff only.

Storage: 4 °C, -20 °C

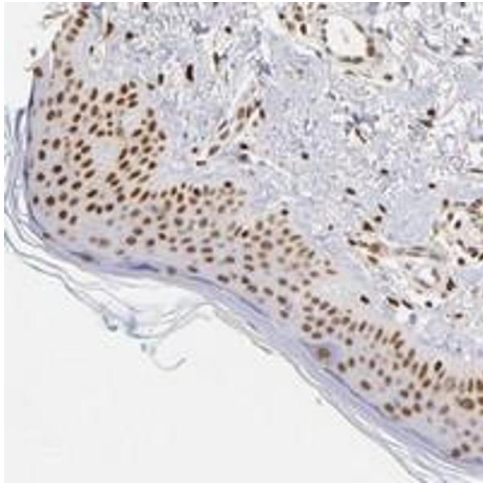
Storage Comment: Store at 4°C. For long term storage store at -20°C.
Aliquot to avoid repeated freezing and thawing.

Images



Immunofluorescence

Image 1. Immunofluorescent staining of human cell line A-431 with C14orf43 polyclonal antibody at 1-4 µg/mL dilution shows positivity in nuclei.



Immunohistochemistry

Image 2. Immunohistochemical staining of human skin with C14orf43 polyclonal antibody shows strong nuclear positivity in epidermal cells.