



[Go to Product page](#)

Datasheet for ABIN5649525
anti-C15orf27 antibody

1 Image

Overview

Quantity:	100 µL
Target:	C15orf27
Reactivity:	Human
Host:	Rabbit
Clonality:	Polyclonal
Conjugate:	This C15orf27 antibody is un-conjugated
Application:	Immunohistochemistry (Paraffin-embedded Sections) (IHC (p))

Product Details

Purpose:	Rabbit polyclonal antibody raised against recombinant C15orf27.
Immunogen:	Recombinant protein corresponding to amino acids of human C15orf27.
Sequence:	SLSEDPCPSQ KALDPAPLAR PSPAGSAQTS PELEHRVSLF NQKNQEGFTV FQIRPVIHFQ PTVPMLEDKF RSLESKEQKL HRV
Isotype:	IgG
Cross-Reactivity:	Human

Target Details

Target:	C15orf27
Alternative Name:	C15orf27 (C15orf27 Products)
Background:	Full Gene Name: chromosome 15 open reading frame 27

Target Details

Synonyms: FLJ30304,FLJ38190

Gene ID: 123591

Application Details

Application Notes: Immunohistochemistry (1:500-1:1000)
The optimal working dilution should be determined by the end user.

Restrictions: For Research Use only

Handling

Format: Liquid

Buffer: In PBS, pH 7.2 (40 % glycerol, 0.02 % sodium azide)

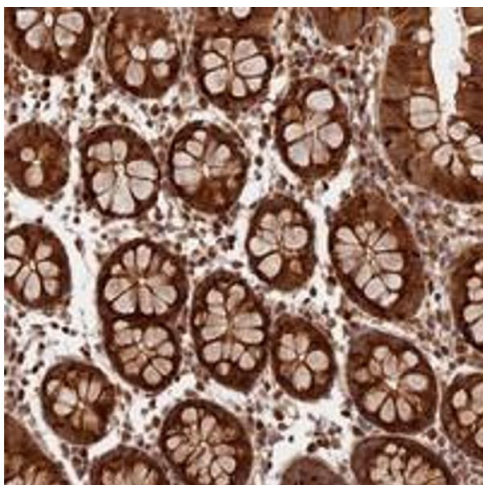
Preservative: Sodium azide

Precaution of Use: This product contains Sodium azide: a POISONOUS AND HAZARDOUS SUBSTANCE which should be handled by trained staff only.

Storage: 4 °C,-20 °C

Storage Comment: Store at 4°C. For long term storage store at -20°C.
Aliquot to avoid repeated freezing and thawing.

Images



Immunohistochemistry

Image 1. Immunohistochemical staining of human colon with C15orf27 polyclonal antibody shows strong cytoplasmic positivity in glandular cells at 1:500-1:1000 dilution.