



[Go to Product page](#)

Datasheet for ABIN5649526
anti-C15ORF39 antibody

1 Image

Overview

| | |
|--------------|---|
| Quantity: | 100 µL |
| Target: | C15ORF39 |
| Reactivity: | Human |
| Host: | Rabbit |
| Clonality: | Polyclonal |
| Conjugate: | This C15ORF39 antibody is un-conjugated |
| Application: | Immunohistochemistry (Paraffin-embedded Sections) (IHC (p)) |

Product Details

| | |
|-------------------|--|
| Purpose: | Rabbit polyclonal antibody raised against recombinant C15orf39. |
| Immunogen: | Recombinant protein corresponding to amino acids of human C15orf39. |
| Sequence: | LCDAISGSVA HSPPEKLREW LETAGPWGQA AWQDCQGVQG LLAKLLSQLQ RFDRTHRCPF PHVVVRAGAIF VPIHLVKERL FPRLPPASVD HVL |
| Isotype: | IgG |
| Cross-Reactivity: | Human |

Target Details

| | |
|-------------------|---|
| Target: | C15ORF39 |
| Alternative Name: | C15orf39 (C15ORF39 Products) |
| Background: | Full Gene Name: chromosome 15 open reading frame 39 |

Target Details

Synonyms: DKFZp434H132,FLJ46337,MGC117209

Gene ID: 56905

Application Details

Application Notes: Immunohistochemistry (1:200-1:500)
The optimal working dilution should be determined by the end user.

Restrictions: For Research Use only

Handling

Format: Liquid

Buffer: In PBS, pH 7.2 (40 % glycerol, 0.02 % sodium azide)

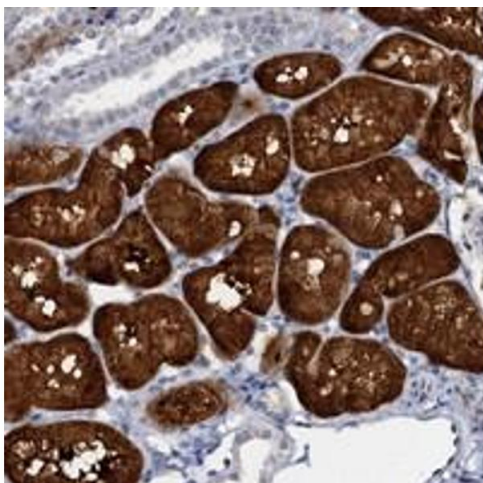
Preservative: Sodium azide

Precaution of Use: This product contains Sodium azide: a POISONOUS AND HAZARDOUS SUBSTANCE which should be handled by trained staff only.

Storage: 4 °C,-20 °C

Storage Comment: Store at 4°C. For long term storage store at -20°C.
Aliquot to avoid repeated freezing and thawing.

Images



Immunohistochemistry

Image 1. Immunohistochemical staining of human kidney with C15orf39 polyclonal antibody shows strong cytoplasmic positivity in tubular cells.