



[Go to Product page](#)

Datasheet for ABIN5649533
anti-C15ORF57 antibody

1 Image

Overview

Quantity:	100 µL
Target:	C15ORF57
Reactivity:	Human
Host:	Rabbit
Clonality:	Polyclonal
Conjugate:	This C15ORF57 antibody is un-conjugated
Application:	Immunohistochemistry (Paraffin-embedded Sections) (IHC (p))

Product Details

Purpose:	Rabbit polyclonal antibody raised against recombinant C15orf57.
Immunogen:	Recombinant protein corresponding to amino acids of human C15orf57.
Sequence:	GSGLRFQMKM FESADSTATR SGQDLWAEIC SCLPNPEQED GANNAFSDSF VDSCPEGEGQ REVADFAVQP AVKPWAPLQD SEVYLASLEK KL
Isotype:	IgG
Cross-Reactivity:	Human

Target Details

Target:	C15ORF57
Alternative Name:	C15orf57 (C15ORF57 Products)
Background:	Full Gene Name: chromosome 15 open reading frame 57

Target Details

Synonyms: CCDC32,FLJ25915,MGC20481

Gene ID: 90416

Application Details

Application Notes: Immunohistochemistry (1:200-1:500)
The optimal working dilution should be determined by the end user.

Restrictions: For Research Use only

Handling

Format: Liquid

Buffer: In PBS, pH 7.2 (40 % glycerol, 0.02 % sodium azide)

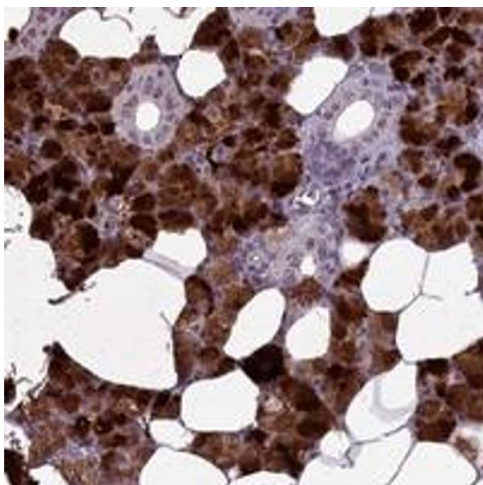
Preservative: Sodium azide

Precaution of Use: This product contains Sodium azide: a POISONOUS AND HAZARDOUS SUBSTANCE which should be handled by trained staff only.

Storage: 4 °C,-20 °C

Storage Comment: Store at 4°C. For long term storage store at -20°C.
Aliquot to avoid repeated freezing and thawing.

Images



Immunohistochemistry

Image 1. Immunohistochemical staining of human salivary gland with C15orf57 polyclonal antibody shows strong cytoplasmic positivity in glandular cells.