



[Go to Product page](#)

Datasheet for ABIN5649538  
**anti-C16ORF46 antibody**

2 Images

### Overview

Quantity:	100 µL
Target:	C16ORF46
Reactivity:	Human
Host:	Rabbit
Clonality:	Polyclonal
Conjugate:	This C16ORF46 antibody is un-conjugated
Application:	Immunofluorescence (IF), Immunohistochemistry (Paraffin-embedded Sections) (IHC (p))

### Product Details

Purpose:	Rabbit polyclonal antibody raised against recombinant C16orf46.
Immunogen:	Recombinant protein corresponding to amino acids of human C16orf46.
Sequence:	ALDVLGKSK NSFLQSEEKV LDVEKDGCV A YAYGLKTADG KGEKRASELA KHPMVNDTPS SPSPAAQISL LT
Isotype:	IgG
Cross-Reactivity:	Human

### Target Details

Target:	C16ORF46
Alternative Name:	C16orf46 ( <a href="#">C16ORF46 Products</a> )
Background:	Full Gene Name: chromosome 16 open reading frame 46

## Target Details

---

Synonyms: FLJ32702

Gene ID: 123775

## Application Details

---

Application Notes: Immunohistochemistry (1:200-1:500)  
Immunofluorescence (1-4 µg/mL)  
The optimal working dilution should be determined by the end user.

Restrictions: For Research Use only

## Handling

---

Format: Liquid

Buffer: In PBS, pH 7.2 (40 % glycerol, 0.02 % sodium azide)

Preservative: Sodium azide

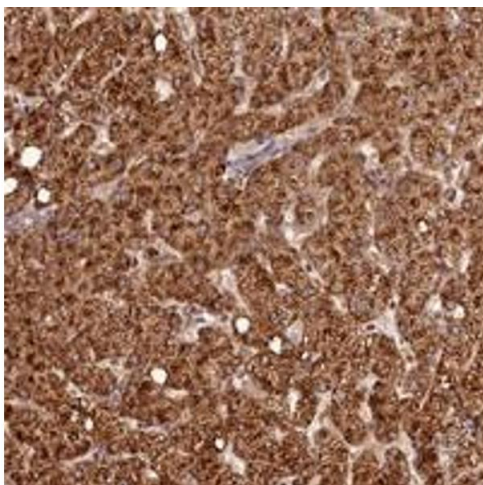
Precaution of Use: This product contains Sodium azide: a POISONOUS AND HAZARDOUS SUBSTANCE which should be handled by trained staff only.

Storage: 4 °C,-20 °C

Storage Comment: Store at 4°C. For long term storage store at -20°C.  
Aliquot to avoid repeated freezing and thawing.

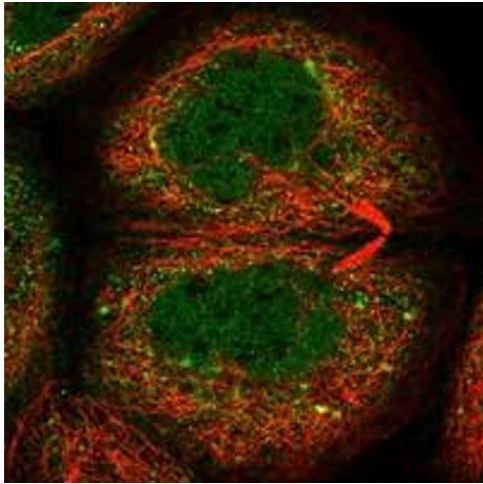
## Images

---



### Immunohistochemistry

**Image 1.** Immunohistochemical staining of human liver with C16orf46 polyclonal antibody shows strong cytoplasmic positivity in hepatocytes.



### Immunofluorescence

**Image 2.** Immunofluorescent staining of human cell line A-431 with C16orf46 polyclonal antibody at 1-4 ug/mL dilution shows positivity in nucleus but not nucleoli and cytoplasm.