



Datasheet for ABIN5649546
anti-C16orf80 antibody



[Go to Product page](#)

1 Image

Overview

Quantity:	100 µL
Target:	C16orf80
Reactivity:	Human
Host:	Rabbit
Clonality:	Polyclonal
Conjugate:	This C16orf80 antibody is un-conjugated
Application:	Immunohistochemistry (Paraffin-embedded Sections) (IHC (p))

Product Details

Purpose:	Rabbit polyclonal antibody raised against recombinant C16orf80.
Immunogen:	Recombinant protein corresponding to amino acids of human C16orf80.
Sequence:	GFLSILYSIG SKPLQIWDKK VRNGHIKRIT DNDIQSLVLE IEGTNVSTTY ITCPADPKKT LGIKLPFLVM IIKNLKKYFT FEVQVLDDKN VRRRFRASNY QSTTRVKPFI CTMPMRLDDG WNQIQFNLL
Isotype:	IgG
Cross-Reactivity:	Human

Target Details

Target:	C16orf80
Alternative Name:	C16orf80 (C16orf80 Products)

Target Details

Background:	Full Gene Name: chromosome 16 open reading frame 80 Synonyms: EVORF,GTL3,fSAP23
Gene ID:	29105

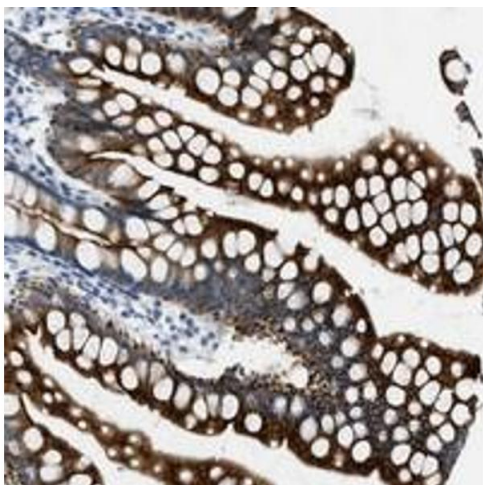
Application Details

Application Notes:	Immunohistochemistry (1:20-1:50) The optimal working dilution should be determined by the end user.
Restrictions:	For Research Use only

Handling

Format:	Liquid
Buffer:	In PBS, pH 7.2 (40 % glycerol, 0.02 % sodium azide)
Preservative:	Sodium azide
Precaution of Use:	This product contains Sodium azide: a POISONOUS AND HAZARDOUS SUBSTANCE which should be handled by trained staff only.
Storage:	4 °C,-20 °C
Storage Comment:	Store at 4°C. For long term storage store at -20°C. Aliquot to avoid repeated freezing and thawing.

Images



Immunohistochemistry

Image 1. Immunohistochemical staining of human small intestine with C16orf80 polyclonal antibody strong cytoplasmic positivity in glandular cells.