



[Go to Product page](#)

Datasheet for ABIN5649573
anti-C19orf26 antibody

1 Image

Overview

Quantity:	100 µL
Target:	C19orf26 (C19ORF26)
Reactivity:	Human
Host:	Rabbit
Clonality:	Polyclonal
Conjugate:	This C19orf26 antibody is un-conjugated
Application:	Immunohistochemistry (Paraffin-embedded Sections) (IHC (p))

Product Details

Purpose:	Rabbit polyclonal antibody raised against recombinant C19orf26.
Immunogen:	Recombinant protein corresponding to amino acids of human C19orf26.
Sequence:	VHQRLNNAME EAEKTTTTYL DNGTHPAQDP DFRGEDPECQ DAETERFLST SSTGRRVSFN EAALFEQSRK TQDKGRRYTL TEGDFHHLKN ARLTHLHLPP LKIVTIHECD
Isotype:	IgG
Cross-Reactivity:	Human

Target Details

Target:	C19orf26 (C19ORF26)
Alternative Name:	C19orf26 (C19ORF26 Products)
Background:	Full Gene Name: chromosome 19 open reading frame 26

Target Details

Synonyms: DOS,MGC40084

Gene ID: 255057

Application Details

Application Notes: Immunohistochemistry (1:50-1:200)
The optimal working dilution should be determined by the end user.

Restrictions: For Research Use only

Handling

Format: Liquid

Buffer: In PBS, pH 7.2 (40 % glycerol, 0.02 % sodium azide)

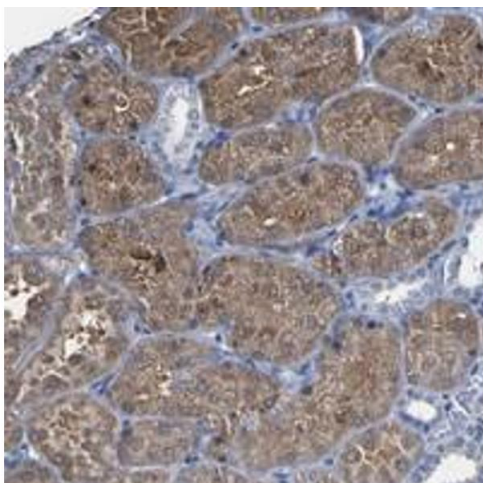
Preservative: Sodium azide

Precaution of Use: This product contains Sodium azide: a POISONOUS AND HAZARDOUS SUBSTANCE which should be handled by trained staff only.

Storage: 4 °C,-20 °C

Storage Comment: Store at 4°C. For long term storage store at -20°C.
Aliquot to avoid repeated freezing and thawing.

Images



Immunohistochemistry

Image 1. Immunohistochemical staining of human kidney with C19orf26 polyclonal antibody shows cytoplasmic positivity in cells in tubules.