



Datasheet for ABIN5649596
anti-C1orf112 antibody



[Go to Product page](#)

2 Images

Overview

Quantity:	100 µL
Target:	C1orf112 (C1ORF112)
Reactivity:	Human
Host:	Rabbit
Clonality:	Polyclonal
Conjugate:	This C1orf112 antibody is un-conjugated
Application:	Western Blotting (WB), Immunohistochemistry (Paraffin-embedded Sections) (IHC (p))

Product Details

Purpose:	Rabbit polyclonal antibody raised against recombinant C1orf112.
Immunogen:	Recombinant protein corresponding to amino acids of human C1orf112.
Sequence:	SCMFALLLAD RSWLLEQHTL EAFTQFAEGT NHEEIVPQCL SSEETKNKVV SFLEKTGFVD ETEAAKVERV KQEKGFWEF F
Isotype:	IgG
Cross-Reactivity:	Human

Target Details

Target:	C1orf112 (C1ORF112)
Alternative Name:	C1orf112 (C1ORF112 Products)
Background:	Full Gene Name: chromosome 1 open reading frame 112

Target Details

Synonyms: FLJ10706,FLJ13470,MGC130018,MGC130019,RP1-97P20.1

Gene ID: 55732

Application Details

Application Notes: Immunohistochemistry (1:50-1:200)
Western Blot (1:250-1:500)
The optimal working dilution should be determined by the end user.

Restrictions: For Research Use only

Handling

Format: Liquid

Buffer: In PBS, pH 7.2 (40 % glycerol, 0.02 % sodium azide)

Preservative: Sodium azide

Precaution of Use: This product contains Sodium azide: a POISONOUS AND HAZARDOUS SUBSTANCE which should be handled by trained staff only.

Storage: 4 °C,-20 °C

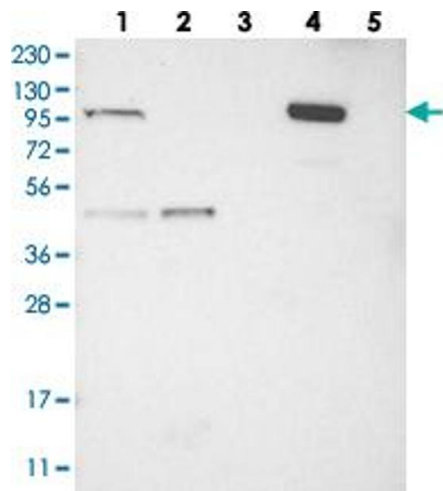
Storage Comment: Store at 4°C. For long term storage store at -20°C.
Aliquot to avoid repeated freezing and thawing.

Images



Immunohistochemistry

Image 1. Immunohistochemical staining of human oral mucosa with C1orf112 polyclonal antibody shows strong nuclear positivity in squamous epithelial cells.



Western Blotting

Image 2. Western blot analysis of Lane 1: RT-4, Lane 2: U-251 MG, Lane 3: Human Plasma, Lane 4: Liver, Lane 5: Tonsil with C1orf112 polyclonal antibody .