



[Go to Product page](#)

Datasheet for ABIN5649605  
**anti-C1orf128 antibody**

1 Image

### Overview

Quantity:	100 µL
Target:	C1orf128 (PITHD1)
Reactivity:	Human
Host:	Rabbit
Clonality:	Polyclonal
Conjugate:	This C1orf128 antibody is un-conjugated
Application:	Immunohistochemistry (Paraffin-embedded Sections) (IHC (p))

### Product Details

Purpose:	Rabbit polyclonal antibody raised against recombinant C1orf128.
Immunogen:	Recombinant protein corresponding to amino acids of human C1orf128.
Sequence:	RSKFVESDAD EELLFNIPFT GNVKLGKIII MGEDDDSHPS EMRLYKNIPQ MSFDDTEREP DQTFSLNRDL TGELEYATKI SRFSNVYHLS IHISKNFGAD TTKVFYIGLR GEWTELRRHE VTICN YEASA NPA
Isotype:	IgG
Cross-Reactivity:	Human

### Target Details

Target:	C1orf128 (PITHD1)
Alternative Name:	C1orf128 ( <a href="#">PITHD1 Products</a> )

## Target Details

Background: Full Gene Name: chromosome 1 open reading frame 128  
Synonyms: HT014,RP5-886K2.4,TXNL1CL

Gene ID: 57095

## Application Details

Application Notes: Immunohistochemistry (1:200-1:500)  
The optimal working dilution should be determined by the end user.

Restrictions: For Research Use only

## Handling

Format: Liquid

Buffer: In PBS, pH 7.2 (40 % glycerol, 0.02 % sodium azide)

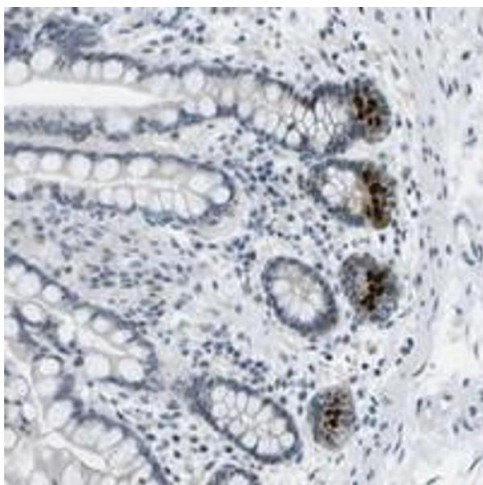
Preservative: Sodium azide

Precaution of Use: This product contains Sodium azide: a POISONOUS AND HAZARDOUS SUBSTANCE which should be handled by trained staff only.

Storage: 4 °C,-20 °C

Storage Comment: Store at 4°C. For long term storage store at -20°C.  
Aliquot to avoid repeated freezing and thawing.

## Images



### Immunohistochemistry

**Image 1.** Immunohistochemical staining of human colon with C1orf128 polyclonal antibody shows strong positivity in Paneth cells at 1:200-1:500 dilution.