

Datasheet for ABIN564961
anti-SEPHS2 antibody (AA 61-150)[Go to Product page](#)

4 Images

Overview

Quantity:	100 µg
Target:	SEPHS2
Binding Specificity:	AA 61-150
Reactivity:	Human
Host:	Mouse
Clonality:	Monoclonal
Conjugate:	This SEPHS2 antibody is un-conjugated
Application:	Western Blotting (WB), ELISA, Immunohistochemistry (Paraffin-embedded Sections) (IHC (p))

Product Details

Purpose:	Mouse monoclonal antibody raised against a partial recombinant SEPHS2.
Immunogen:	SEPHS2 (NP_036380.2, 61 a.a. ~ 150 a.a) partial recombinant protein with GST tag. MW of the GST tag alone is 26 KDa.
Sequence:	GCKVPQEALL KLLAGLTRPD VRPPLGRGLV GGQEEASQEA GLPAGAGPSP TFPALGIGMD SCVIPLRHGG LSLVQTDDFF YPLVEDPYMM
Clone:	2G9
Isotype:	IgG1
Cross-Reactivity:	Human
Characteristics:	Antibody Reactive Against Recombinant Protein.

Target Details

Target:	SEPHS2
Alternative Name:	SEPHS2 (SEPHS2 Products)
Background:	Full Gene Name: selenophosphate synthetase 2 Synonyms: SPS2
Gene ID:	22928
NCBI Accession:	NM_012248

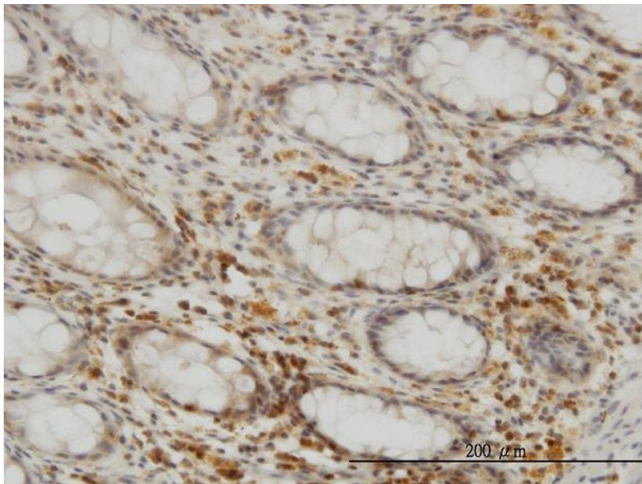
Application Details

Application Notes:	Optimal working dilution should be determined by the investigator.
Restrictions:	For Research Use only

Handling

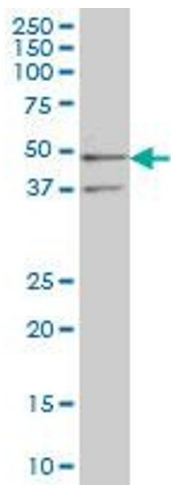
Buffer:	In 1x PBS, pH 7.4
Handling Advice:	Aliquot to avoid repeated freezing and thawing.
Storage:	-20 °C
Storage Comment:	Store at -20°C or lower. Aliquot to avoid repeated freezing and thawing.

Images



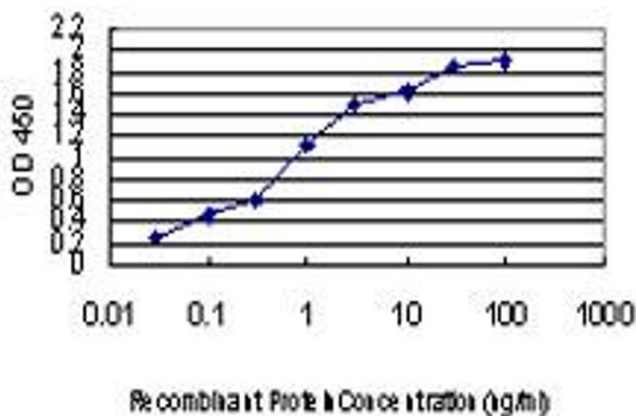
Immunostaining

Image 1. Immunoperoxidase of monoclonal antibody to SEPHS2 on formalin-fixed paraffin-embedded human colon. [antibody concentration 3 ug/ml]



Western Blotting

Image 2. SEPHS2 monoclonal antibody (M02), clone 2G9
Western Blot analysis of SEPHS2 expression in K-562 .



ELISA

Image 3. Detection limit for recombinant GST tagged
SEPHS2 is approximately 0.03ng/ml as a capture antibody.

Please check the [product details page](#) for more images. Overall 4 images are available for ABIN564961.