



[Go to Product page](#)

Datasheet for ABIN5649625

## anti-SWT1 antibody

### 1 Image

#### Overview

Quantity:	100 µL
Target:	SWT1
Reactivity:	Human
Host:	Rabbit
Clonality:	Polyclonal
Conjugate:	This SWT1 antibody is un-conjugated
Application:	Immunohistochemistry (Paraffin-embedded Sections) (IHC (p))

#### Product Details

Purpose:	Rabbit polyclonal antibody raised against recombinant C1orf26.
Immunogen:	Recombinant protein corresponding to amino acids of human C1orf26.
Sequence:	ALTTSNIASF EEFICLQKL MAAVRDILEG IQRILAPNSD YQDVETLYNF LIKYEVNKNV KFTAQEIYDC VSQTEYREKL TIGC
Isotype:	IgG
Cross-Reactivity:	Human

#### Target Details

Target:	SWT1
Alternative Name:	C1orf26 ( <a href="#">SWT1 Products</a> )
Background:	Full Gene Name: chromosome 1 open reading frame 26

## Target Details

---

Synonyms: FLJ20121,FLJ35944

Gene ID: 54823

## Application Details

---

Application Notes: Immunohistochemistry (1:200-1:500)  
The optimal working dilution should be determined by the end user.

Restrictions: For Research Use only

## Handling

---

Format: Liquid

Buffer: In PBS, pH 7.2 (40 % glycerol, 0.02 % sodium azide)

Preservative: Sodium azide

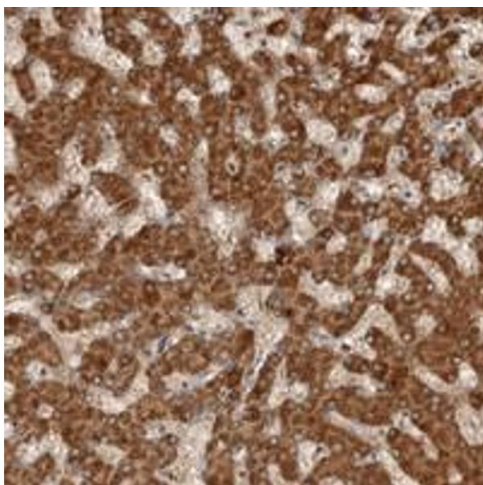
Precaution of Use: This product contains Sodium azide: a POISONOUS AND HAZARDOUS SUBSTANCE which should be handled by trained staff only.

Storage: 4 °C,-20 °C

Storage Comment: Store at 4°C. For long term storage store at -20°C.  
Aliquot to avoid repeated freezing and thawing.

## Images

---



### Immunohistochemistry

**Image 1.** Immunohistochemical staining of human liver with C1orf26 polyclonal antibody shows distinct cytoplasmic positivity in hepatocytes at 1:200-1:500 dilution.