



[Go to Product page](#)

Datasheet for ABIN5649699
anti-CCDC175 antibody

1 Image

Overview

Quantity:	100 µL
Target:	CCDC175
Reactivity:	Human
Host:	Rabbit
Clonality:	Polyclonal
Application:	Immunohistochemistry (Paraffin-embedded Sections) (IHC (p))

Product Details

Purpose:	Rabbit polyclonal antibody raised against recombinant C14orf38.
Immunogen:	Recombinant protein corresponding to amino acids of recombinant C14orf38.
Sequence:	AGEKLVQAAA VSTGPSLELC TLPSTLGSSV AVEALEQLFV VEQLQSDYF KCNEEAKIFL KDIHAVVKKL EEMRKATIDL LEIESMELNK LYYLLETLPN SIKRELEECV RDARRLNLF INTIKMRITR TENEIELL
Isotype:	IgG
Cross-Reactivity:	Human

Target Details

Target:	CCDC175
Alternative Name:	C14orf38 (CCDC175 Products)
Background:	Full Gene Name: chromosome 14 open reading frame 38 Synonyms: c14_5395

Target Details

Gene ID: 729665

Application Details

Application Notes: Immunohistochemistry (1:200-1:500)
The optimal working dilution should be determined by the end user.

Restrictions: For Research Use only

Handling

Format: Liquid

Buffer: In PBS, pH 7.2 (40 % glycerol, 0.02 % sodium azide)

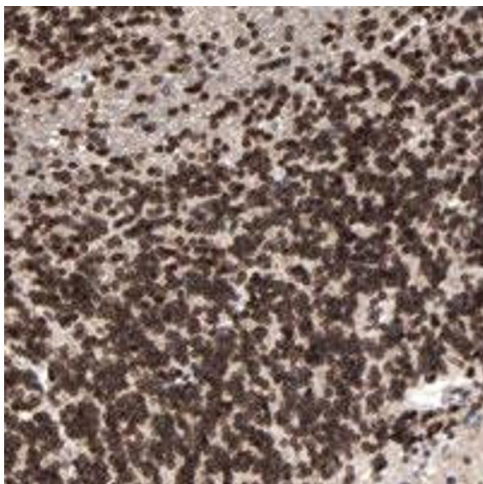
Preservative: Sodium azide

Precaution of Use: This product contains Sodium azide: a POISONOUS AND HAZARDOUS SUBSTANCE which should be handled by trained staff only.

Storage: 4 °C,-20 °C

Storage Comment: Store at 4°C. For long term storage store at -20°C.
Aliquot to avoid repeated freezing and thawing.

Images



Immunohistochemistry

Image 1. Immunohistochemical staining of human cerebellum with C14orf38 polyclonal antibody shows strong nuclear membranous positivity in cells of granular layer.