



[Go to Product page](#)

Datasheet for ABIN5649705
anti-C1ORF216 antibody

1 Image

Overview

Quantity:	100 µL
Target:	C1ORF216
Reactivity:	Human
Host:	Rabbit
Clonality:	Polyclonal
Conjugate:	This C1ORF216 antibody is un-conjugated
Application:	Immunohistochemistry (Paraffin-embedded Sections) (IHC (p))

Product Details

Purpose:	Rabbit polyclonal antibody raised against recombinant C1orf216.
Immunogen:	Recombinant protein corresponding to amino acids of recombinant C1orf216.
Sequence:	MFAIQPLAE GGQFLGDPPP GLCQPELQPD SNSNFMASAK DANENWHGMP GRVEPILRRS SSESPSDNQA
Isotype:	IgG
Cross-Reactivity:	Human

Target Details

Target:	C1ORF216
Alternative Name:	C1orf216 (C1ORF216 Products)
Background:	Full Gene Name: chromosome 1 open reading frame 216

Target Details

Synonyms: FLJ38984

Gene ID: 127703

Application Details

Application Notes: Immunohistochemistry (1:20-1:50)
The optimal working dilution should be determined by the end user.

Restrictions: For Research Use only

Handling

Format: Liquid

Buffer: In PBS, pH 7.2 (40 % glycerol, 0.02 % sodium azide)

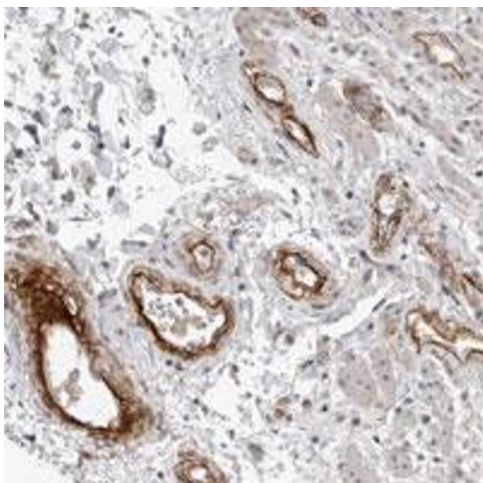
Preservative: Sodium azide

Precaution of Use: This product contains Sodium azide: a POISONOUS AND HAZARDOUS SUBSTANCE which should be handled by trained staff only.

Storage: 4 °C,-20 °C

Storage Comment: Store at 4°C. For long term storage store at -20°C.
Aliquot to avoid repeated freezing and thawing.

Images



Immunohistochemistry

Image 1. Immunohistochemical staining of human rectum with C1orf216 polyclonal antibody shows strong positivity in endothelial cells at 1:10-1:20 dilution.